

Anti-TRIM25 Antibody

Catalog Number: A03232-2

About TRIM25

TRIM25, also known as estrogen responsive finger protein (EFP) is a member of the RING finger-B box-coiled coil family and is a downstream target of estrogen receptor α . Mice lacking this gene displayed an underdeveloped uterus and reduced estrogen responsiveness demonstrating that this protein is essential for estrogen dependent proliferation. TRIM25 expression is increased in breast carcinoma where it promotes the growth of breast tumor by functioning as an E3 ubiquitin ligase that targets the negative cell cycle checkpoint 14-3-3s. Recent reports have indicated that TRIM25 E3 ubiquitin ligase is essential for the retinoic-acid-inducible gene 1 (RIG-1) signaling pathway to elicit host antiviral innate immunity.

Overview

Product Name	Anti-TRIM25 Antibody
Reactive Species	Human, Mouse
Description	Boster Bio Anti-TRIM25 Antibody (Catalog # A03232-2). Tested in ELISA, WB, ICC, IF applications. This antibody reacts with Human, Mouse.
Application	ELISA, IF, ICC, WB
Clonality	Polyclonal
Formulation	TRIM25 Antibody is supplied in PBS containing 0.02% sodium azide.
Storage Instructions	TRIM25 antibody can be stored at 4°C for three months and -20°C, stable for up to one year. Avoid repeated freeze-thaw cycles. Antibodies should not be exposed to prolonged high temperatures.
Host	Rabbit
Uniprot ID	Q14258

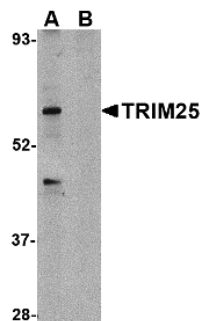
Technical Details

Immunogen	TRIM25 antibody was raised against a 19 amino acid synthetic peptide from near the carboxy terminus of human TRIM25. The immunogen is located within amino acids 520 - 570 of TRIM25.
Predicted Reactive Species	Bovine, Chicken
Isotype	IgG
Form	Liquid
Concentration	1 mg/mL
Purification	TRIM25 Antibody is affinity chromatography purified via peptide column.
Suggested Dilutions	TRIM25 antibody can be used for detection of TRIM25 by Western blot at 1 μ g/mL. Antibody can also be used for immunocytochemistry starting at 20 μ g/mL. For immunofluorescence start at 20

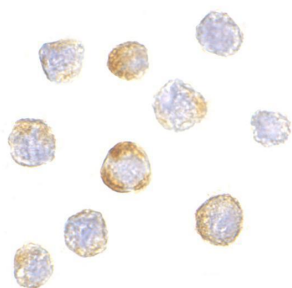
ug/mL.

Antibody validated: Western Blot in human samples; Immunocytochemistry in human samples and Immunofluorescence in human samples. All other applications and species not yet tested. Optimal dilutions for each application should be determined by the researcher.

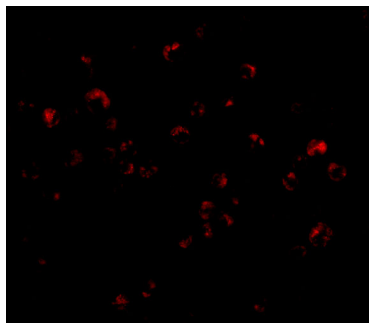
Anti-TRIM25 Antibody (A03232-2) Images



Western blot analysis of TRIM25 in HeLa cell lysate in (A) the absence and (B) presence of blocking peptide with TRIM25 antibody at 1 ug/mL.



Immunocytochemistry of TRIM25 in HeLa cells with TRIM25 antibody at 20 ug/mL.



Immunofluorescence of TRIM25 in HeLa cells with TRIM25 antibody at 20 ug/mL.

Submit a product review to [Biocompare.com](https://www.biocompare.com)

Submit a review of this product to [Biocompare.com](https://www.biocompare.com) to receive a \$20 Amazon.com giftcard! Your reviews help your fellow scientists make the right decisions. Thank you for your contribution.



Anti-TRIM25 Antibody

For Research Use Only. Not for use in diagnostic procedures.