

## Anti-NOTUM Antibody

Catalog Number: A03235

### About NOTUM

In *Drosophila*, the notum gene is regulated by the Wingless pathway and encodes a secreted hydrolase that modifies heparan sulfate proteoglycans. The mammalian homolog has been shown to be able to cleave glypicans and can release GPI-anchored proteins from the mammalian cell surface. Like the *Drosophila* NOTUM, the mammalian protein can act as a negative regulator of the Wnt signaling pathway. NOTUM is expressed at a low level in most mammalian tissues, although it is overexpressed in a subset of human hepatocellular carcinomas. Its transcription is regulated by beta-catenin/TCF and is a target of the Wnt signaling pathway, forming a negative feedback loop that regulates the expression and activity of the Wnt pathway.

### Overview

Product Name	Anti-NOTUM Antibody
Reactive Species	Human, Mouse, Rat
Description	Boster Bio Anti-NOTUM Antibody (Catalog # A03235). Tested in ELISA, WB, IHC-P, IF applications. This antibody reacts with Human, Mouse, Rat.
Application	ELISA, IF, IHC-P, WB
Clonality	Polyclonal
Formulation	NOTUM Antibody is supplied in PBS containing 0.02% sodium azide.
Storage Instructions	Antibody can be stored at 4°C up to one year. Antibodies should not be exposed to prolonged high temperatures.
Host	Rabbit
Uniprot ID	Q6P988

### Technical Details

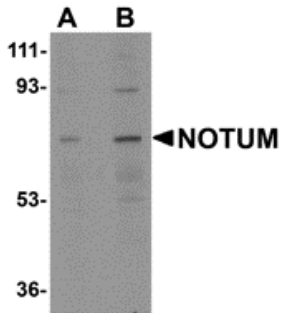
Immunogen	NOTUM antibody was raised against a 19 amino acid synthetic peptide near the amino terminus of human NOTUM. The immunogen is located within amino acids 90 - 140 of NOTUM.
Predicted Reactive Species	Bovine, Chicken
Isotype	IgG
Form	Liquid
Concentration	1 mg/mL
Purification	NOTUM Antibody is affinity chromatography purified via peptide column.

**Suggested Dilutions**

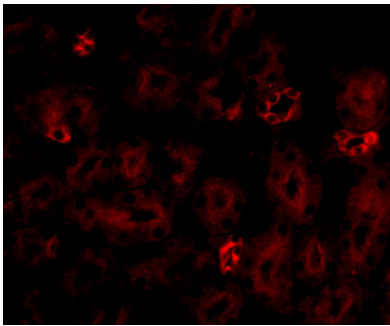
NOTUM antibody can be used for detection of NOTUM by Western blot at 0.5 - 1 ug/mL. Antibody can also be used for immunohistochemistry starting at 2.5 ug/mL. For immunofluorescence start at 20 ug/mL.

Antibody validated: Western Blot in human samples; Immunohistochemistry in human samples and Immunofluorescence in mouse samples. All other applications and species not yet tested. Optimal dilutions for each application should be determined by the researcher.

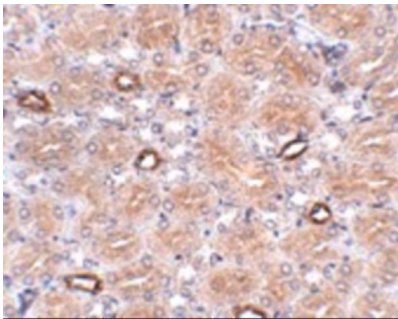
## Anti-NOTUM Antibody (A03235) Images



Western blot analysis of NOTUM in human kidney tissue lysate with NOTUM antibody at (A) 0.5 and (B) 1 ug/mL.



Immunofluorescence of NOTUM in Mouse Kidney cells with NOTUM antibody at 20 ug/mL.



Immunohistochemistry of NOTUM in human brain tissue with NOTUM antibody at 2.5 ug/mL.

### Submit a product review to [Biocompare.com](https://www.biocompare.com)

Submit a review of this product to [Biocompare.com](https://www.biocompare.com) to receive a \$20 Amazon.com giftcard! Your reviews help your fellow scientists make the right decisions. Thank you for your contribution.



Anti-NOTUM Antibody

For Research Use Only. Not for use in diagnostic procedures.