

Anti-PEG10 Monoclonal Antibody

Catalog Number: A03240

About PEG10

Cullins assemble a potentially large number of ubiquitin ligases by binding to the RING protein ROC1 to catalyse polyubiquitination, as well as binding to various specificity factors to recruit substrates. Cullin 7 is a component of E3 ubiquitin ligase complexes, which mediate the ubiquitination and subsequent proteasomal degradation of target proteins. Cullin 7 seems to be involved proteasomal degradation of proteins involved in endothelial proliferation and/or differentiation. Cullin 7 is part of a SCF-like complex consisting of CUL7, RBX1, SKP1, FBXW8 and GLMN isoform 1. Cullin 7 interacts with a complex of SKP1 and FBXW8, but not with SKP1 alone.

Overview

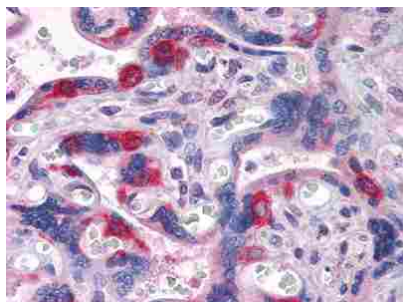
Product Name	Anti-PEG10 Monoclonal Antibody
Reactive Species	Human
Description	Boster Bio Anti-PEG10 Monoclonal Antibody catalog # A03240. Tested in IF, IHC, WB applications. This antibody reacts with Human.
Application	IF, IHC, WB
Clonality	Monoclonal 1B1C4
Formulation	Ascitic fluid containing 0.03% sodium azide.
Storage Instructions	Store at -20°C for one year. For short term storage and frequent use, store at 4°C for up to one month. Avoid repeated freeze-thaw cycles.
Host	Mouse
Uniprot ID	Q86TG7

Technical Details

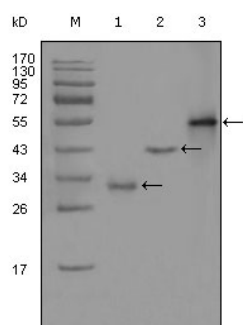
Immunogen	Purified recombinant fragment of PEG10 (aa1-120) expressed in E. Coli.
Predicted Reactive Species	Bovine, Canine, Equine, Guinea Pig, Rabbit
Isotype	IgG
Form	Liquid
Concentration	This antibody's concentration is >0.5mg/ml.
Purification	Ascitic fluid
Suggested Dilutions	Dilute the sample so that the expected range of concentrations fall within the detection range of this kit. If the expected range of concentration is unknown, a pilot test should be conducted to decide the

optimal dilution ratio for your samples.
Some PubMed article(s) citing the expression level of this target are as follows:
Boster Bio's internal QC testing used:
WB, 1:500-1:2000
IHC, 1:200-1:1000
IF, 1:200-1:1000

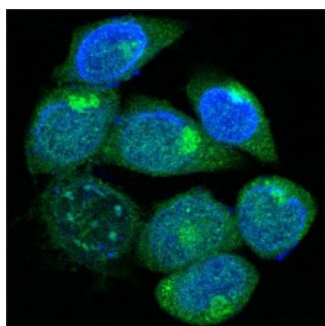
Anti-PEG10 Monoclonal Antibody (A03240) Images



Immunohistochemistry (IHC) analysis of paraffin-embedded human Placenta tissues with AEC staining using PEG10 Monoclonal antibody.



Western Blot (WB) analysis using PEG10 Monoclonal antibody against truncated Trx-PEG10 recombinant protein (1), truncated GST-PEG10 (aa1-120) recombinant protein (2) and full-length PEG10 (aa1-325)-hlgGfc transfected CHO-K1 cell lysate (3).



Confocal Immunofluorescence (IF) analysis of methanol-fixed HepG2 cells using PEG10 Monoclonal antibody (green), showing cytoplasmic localization. Blue: DRAQ5 fluorescent DNA dye.

Submit a product review to Biocompare.com

Submit a review of this product to Biocompare.com to receive a \$20 Amazon.com giftcard! Your reviews help your fellow scientists make the right decisions. Thank you for your contribution.



Anti-PEG10 Monoclonal Antibody