

Anti-GLUT3 SLC2A3 Antibody

Catalog Number: A03259-1

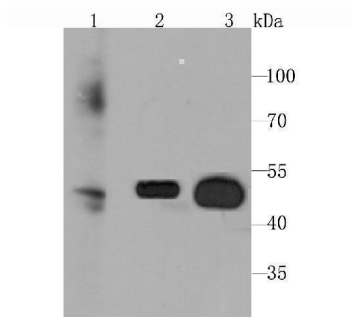
Overview

Product Name	Anti-GLUT3 SLC2A3 Antibody
Reactive Species	Human, Mouse, Rat
Description	Boster Bio Anti-GLUT3 SLC2A3 Antibody catalog # A03259-1. Tested in WB,IHC,Flow Cytometry applications. This antibody reacts with Human,Mouse,Rat.
Application	Flow Cytometry, IHC, WB
Clonality	Polyclonal
Formulation	Rabbit IgG, 1mg/ml in PBS with 0.02% sodium azide, 50% glycerol, pH7.2
Storage Instructions	Store at -20°C for one year. For short term storage and frequent use, store at 4°C for up to one month. Avoid repeated freeze-thaw cycles.
Host	Rabbit
Uniprot ID	P11169

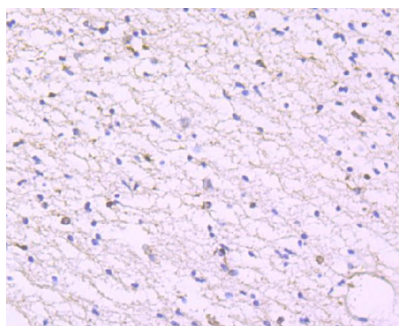
Technical Details

Immunogen	recombinant protein
Isotype	IgG
Form	Liquid
Concentration	1 mg/ml
Purification	ProA affinity purified
Suggested Dilutions	WB: 1:500-1:2,000 IHC: 1:50-1:200 FC: 1:50-1:100

Anti-GLUT3 SLC2A3 Antibody (A03259-1) Images



Western blot analysis of Glucose Transporter GLUT3 on different cell lysate using anti-Glucose Transporter GLUT3 antibody at 1/1,000 dilution. Positive control □ Lane1: Human lung Lane2: HepG2 Lane3: Mouse heart



Immunohistochemical analysis of paraffin-embedded human brain tissue using anti-Glucose Transporter GLUT3 antibody. Counter stained with hematoxylin.

Submit a product review to [Biocompare.com](https://www.biocompare.com)

Submit a review of this product to [Biocompare.com](https://www.biocompare.com) to receive a \$20 Amazon.com giftcard! Your reviews help your fellow scientists make the right decisions. Thank you for your contribution.



Anti-GLUT3 SLC2A3 Antibody

For Research Use Only. Not for use in diagnostic procedures.