

## Anti-Claudin 5/CLDN5 Antibody

Catalog Number: A03260-3

### About CLDN5

Claudin-5 is a protein that in humans is encoded by the CLDN5 gene. This gene encodes a member of the claudin family. Claudins are integral membrane proteins and components of tight junction strands. Tight junction strands serve as a physical barrier to prevent solutes and water from passing freely through the paracellular space between epithelial or endothelial cell sheets. Mutations in this gene have been found in patients with velocardiofacial syndrome. Alternative splicing results in multiple transcript variants encoding distinct isoforms.

### Overview

|                      |   |
|----------------------|---|
| Product Name         | Anti-Claudin 5/CLDN5 Antibody   |
| Reactive Species     | Human   |
| Description          | Boster Bio Anti-Claudin 5/CLDN5 Antibody catalog # A03260-3. Tested in IF, IHC applications. This antibody reacts with Human.   |
| Application          | IF, IHC   |
| Clonality            | Polyclonal  |
| Formulation          | Each vial contains 4mg Trehalose, 0.9mg NaCl, 0.2mg Na <sub>2</sub> HPO <sub>4</sub> , 0.01mg NaN <sub>3</sub> .  |
| Storage Instructions | Store at -20°C for one year from date of receipt. After reconstitution, at 4°C for one month. It can also be aliquotted and stored frozen at -20°C for six months. Avoid repeated freeze-thaw cycles. |
| Host                 | Rabbit  |
| Uniprot ID           | O00501  |

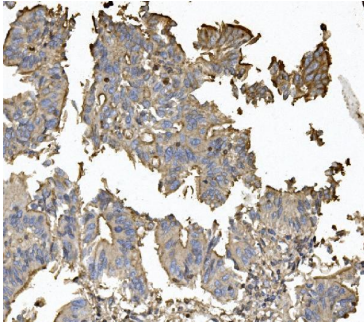
### Technical Details

|                               |  |
|-------------------------------|--|
| Immunogen                     | A synthetic peptide corresponding to a sequence at the C-terminus of human Claudin 5/CLDN5, which shares 95% and 90% amino acid (aa) sequence identity with mouse and rat Claudin 5/CLDN5, respectively. |
| Recommended Detection Systems | Boster recommends HRP Conjugated anti-Rabbit IgG Super Vision Assay Kit (SV0002-1) for IHC(P).   |
| Cross Reactivity              | No cross-reactivity with other proteins.   |
| Isotype                       | Rabbit IgG   |
| Form                          | Lyophilized  |
| Concentration                 | Adding 0.2 ml of distilled water will yield a concentration of 500 ug/ml.  |
| Purification                  | Immunogen affinity purified.   |

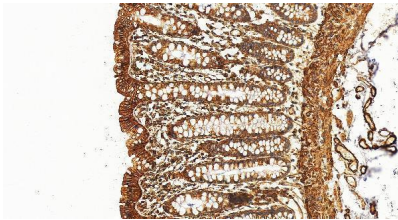
Suggested Dilutions

Immunohistochemistry (Paraffin-embedded Section), 1-2ug/ml, Human  
Immunofluorescence, 5ug/ml, Human

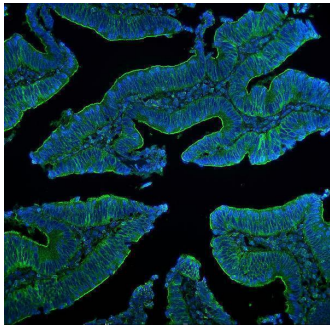
## Anti-Claudin 5/CLDN5 Antibody (A03260-3) Images



IHC analysis of Claudin 5/CLDN5 using anti-Claudin 5/CLDN5 antibody (A03260-3). Claudin 5/CLDN5 was detected in paraffin-embedded section of human rectal cancer tissue. Heat mediated antigen retrieval was performed in EDTA buffer (pH8.0, epitope retrieval solution). The tissue section was blocked with 10% goat serum. The tissue section was then incubated with 2ug/ml rabbit anti-Claudin 5/CLDN5 Antibody (A03260-3) overnight at 4°C. Biotinylated goat anti-rabbit IgG was used as secondary antibody and incubated for 30 minutes at 37°C. The tissue section was developed using Streptavidin-Biotin-Complex (SABC) (Catalog # SA1022) with DAB as the chromogen.



IHC analysis of Claudin 5/CLDN5 using anti-Claudin 5/CLDN5 antibody (A03260-3). Claudin 5/CLDN5 was detected in a paraffin-embedded section of human colon tissue. Heat mediated antigen retrieval was performed in EDTA buffer (pH 8.0, epitope retrieval solution). The tissue section was blocked with 10% goat serum. The tissue section was then incubated with 2 ug/ml rabbit anti-Claudin 5/CLDN5 Antibody (A03260-3) overnight at 4°C. Peroxidase Conjugated Goat Anti-rabbit IgG was used as secondary antibody and incubated for 30 minutes at 37°C. The tissue section was developed using HRP Conjugated Rabbit IgG Super Vision Assay Kit (Catalog # SV0002) with DAB as the chromogen.



IF analysis of Claudin 5/CLDN5 using anti-Claudin 5/CLDN5 antibody (A03260-3). Claudin 5/CLDN5 was detected in paraffin-embedded section of human intestinal cancer tissue. Heat mediated antigen retrieval was performed in EDTA buffer (pH8.0, epitope retrieval solution). The tissue section was blocked with 10% goat serum. The tissue section was then incubated with 5ug/mL rabbit anti-Claudin 5/CLDN5 Antibody (A03260-3) overnight at 4°C. DyLight®488 Conjugated Goat Anti-Rabbit IgG (BA1127) was used as secondary antibody at 1:100 dilution and incubated for 30 minutes at 37°C. The section was counterstained with DAPI. Visualize using a fluorescence microscope and filter sets appropriate for the label used.

### Submit a product review to [Biocompare.com](https://www.biocompare.com)

Submit a review of this product to [Biocompare.com](https://www.biocompare.com) to receive a \$20 Amazon.com giftcard! Your reviews help your fellow scientists make the right decisions. Thank you for your contribution.



Anti-Claudin 5/CLDN5 Antibody

For Research Use Only. Not for use in diagnostic procedures.