

Anti-TEF1/TEAD-1/TEAD1 Antibody Picoband®

Catalog Number: A03263-2

About TEAD1

Transcriptional enhancer factor TEF-1 also known as TEA domain family member 1 (TEAD1) and transcription factor 13 (TCF-13) is a protein that in humans is encoded by the TEAD1 gene. This gene encodes a ubiquitous transcriptional enhancer factor that is a member of the TEA/ATTS domain family. This protein directs the transactivation of a wide variety of genes and, in placental cells, also acts as a transcriptional repressor. Mutations in this gene cause Sveinsson's chorioretinal atrophy. Additional transcript variants have been described but their full-length natures have not been experimentally verified.

Overview

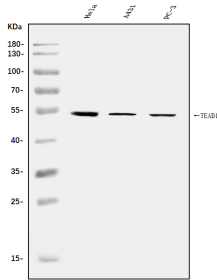
Product Name	Anti-TEF1/TEAD-1/TEAD1 Antibody Picoband®
Reactive Species	Human
Description	Boster Bio Anti-TEF1/TEAD-1/TEAD1 Antibody Picoband® catalog # A03263-2. Tested in ELISA, WB applications. This antibody reacts with Human. The brand Picoband indicates this is a premium antibody that guarantees superior quality, high affinity, and strong signals with minimal background in Western blot applications. Only our best-performing antibodies are designated as Picoband, ensuring unmatched performance.
Application	ELISA, WB
Clonality	Polyclonal
Formulation	Each vial contains 4mg Trehalose, 0.9mg NaCl, 0.2mg Na ₂ HPO ₄ .
Storage Instructions	Store at -20°C for one year from date of receipt. After reconstitution, at 4°C for one month. It can also be aliquotted and stored frozen at -20°C for six months. Avoid repeated freeze-thaw cycles.
Host	Rabbit
Uniprot ID	P28347

Technical Details

Immunogen	E.coli-derived human TEF1/TEAD-1/TEAD1 recombinant protein (Position: D38-D426).
Recommended Detection Systems	Boster recommends Enhanced Chemiluminescent Kit with anti-Rabbit IgG (EK1002) for Western blot.
Cross Reactivity	No cross-reactivity with other proteins.
Isotype	Rabbit IgG
Form	Lyophilized
Concentration	Adding 0.2 ml of distilled water will yield a concentration of 500 ug/ml.

Purification	Immunogen affinity purified.
Suggested Dilutions	Western blot, 0.25-0.5ug/ml, Human ELISA, 0.1-0.5ug/ml, -

Anti-TEF1/TEAD-1/TEAD1 Antibody Picoband® (A03263-2) Images



Western blot analysis of TEF1/TEAD-1/TEAD1 using anti-TEF1/TEAD-1/TEAD1 antibody (A03263-2). Electrophoresis was performed on a 5-20% SDS-PAGE gel at 70V (Stacking gel) / 90V (Resolving gel) for 2-3 hours. The sample well of each lane was loaded with 30ug of sample under reducing conditions. Lane 1: human HeLa whole cell lysates, Lane 2: human A431 whole cell lysates, Lane 3: human PC-3 whole cell lysates. After Electrophoresis, proteins were transferred to a Nitrocellulose membrane at 150mA for 50-90 minutes. Blocked the membrane with 5% Non-fat Milk/ TBS for 1.5 hour at RT. The membrane was incubated with rabbit anti-TEF1/TEAD-1/TEAD1 antigen affinity purified polyclonal antibody (Catalog # A03263-2) at 0.5 ug/mL overnight at 4°C, then washed with TBS-0.1%Tween 3 times with 5 minutes each and probed with a goat anti-rabbit IgG-HRP secondary antibody at a dilution of 1:5000 for 1.5 hour at RT. The signal is developed using an Enhanced Chemiluminescent detection (ECL) kit (Catalog # EK1002) with Tanon 5200 system. A specific band was detected for TEF1/TEAD-1/TEAD1 at approximately 50KD. The expected band size for TEF1/TEAD-1/TEAD1 is at 50KD.

Submit a product review to Biocompare.com

Submit a review of this product to Biocompare.com to receive a \$20 Amazon.com giftcard! Your reviews help your fellow scientists make the right decisions. Thank you for your contribution.



Anti-TEF1/TEAD-1/TEAD1 Antibody

For Research Use Only. Not for use in diagnostic procedures.