

Anti-Poly [ADP-ribose] polymerase 2 PARP2 Antibody

Catalog Number: A03270

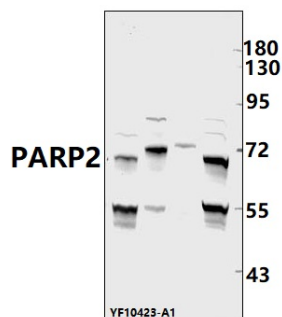
Overview

Product Name	Anti-Poly [ADP-ribose] polymerase 2 PARP2 Antibody
Reactive Species	Human, Mouse, Rat
Description	Boster Bio Anti-Poly [ADP-ribose] polymerase 2 PARP2 Antibody catalog # A03270. Tested in WB applications. This antibody reacts with Human, Mouse, Rat.
Application	WB
Clonality	Polyclonal
Formulation	Rabbit IgG, 1mg/ml in PBS with 0.02% sodium azide, 50% glycerol, pH7.2
Storage Instructions	Store at -20°C for one year. For short term storage and frequent use, store at 4°C for up to one month. Avoid repeated freeze-thaw cycles.
Host	Rabbit
Uniprot ID	Q9UGN5

Technical Details

Immunogen	Synthetic peptide, corresponding to Human PARP2.
Isotype	IgG
Form	Liquid
Concentration	1 mg/ml
Purification	ProA affinity purified
Suggested Dilutions	WB: 1:1000-1:2000

Anti-Poly [ADP-ribose] polymerase 2 PARP2 Antibody (A03270) Images



Western blot (WB) analysis of PARP2 pAb at 1:1000 dilution
Lane1:SHSY5Y whole cell lysate(40ug) Lane2:U-87MG whole cell lysate(40ug) Lane3:The heart tissue lysate of Rat(40ug) Lane4:H9C2 whole cell lysate(40ug)

Submit a product review to Biocompare.com

Submit a review of this product to Biocompare.com to receive a \$20 Amazon.com giftcard! Your reviews help your fellow scientists make the right decisions. Thank you for your contribution.



Anti-Poly [ADP-ribose] polymerase 2 PARP2 Antibody

For Research Use Only. Not for use in diagnostic procedures.