

## Anti-SLAMF2 CD48 Antibody

Catalog Number: A03281

### About CD48

The signaling lymphocyte-activation molecule family member 2 (SLAMF2), also known as CD48, is a GPI-anchored protein that exists as both a soluble and membrane-associated form and is expressed in almost all leukocyte populations particularly in mitogen-stimulated human lymphocytes. SLAMF2 is a high-affinity ligand for SLAMF4, also known as 2B4, as well as a low-affinity ligand for CD2, and can thus stimulate cells expressing these receptors. It has been shown to be an IL-3-induced activating receptor on eosinophils and is likely to be involved in promoting allergic inflammation. SLAMF2 is also thought to be involved in the IL-18/IL-18R signaling cascade in T and natural killer cells to produce interferon-gamma.

### Overview

Product Name	Anti-SLAMF2 CD48 Antibody
Reactive Species	Human, Mouse, Rat
Description	Boster Bio Anti-SLAMF2 CD48 Antibody (Catalog # A03281). Tested in ELISA, WB applications. This antibody reacts with Human, Mouse, Rat.
Application	ELISA, WB
Clonality	Polyclonal Clone: SK7
Formulation	SLAMF2 Antibody is supplied in PBS containing 0.02% sodium azide.
Storage Instructions	SLAMF2 antibody can be stored at 4°C for three months and -20°C, stable for up to one year. Avoid repeated freeze-thaw cycles. Antibodies should not be exposed to prolonged high temperatures.
Host	Rabbit
Uniprot ID	P09326

### Technical Details

Immunogen	SLAMF2 antibody was raised against a 19 amino acid synthetic peptide near the center of human SLAMF2. The immunogen is located within amino acids 90 - 140 of SLAMF2.
Predicted Reactive Species	Rat
Cross Reactivity	Two isoforms of SLAMF2 are known to exist; this antibody will recognize both isoforms. SLAMF2 antibody is predicted to not cross-react with other SLAM protein family members.
Isotype	IgG
Form	Liquid
Concentration	1 mg/mL
Purification	SLAMF2 Antibody is affinity chromatography purified via peptide column.

**Suggested Dilutions**

Dilute the sample so that the expected range of concentrations fall within the detection range of this kit.

If the expected range of concentration is unknown, a pilot test should be conducted to decide the optimal dilution ratio for your samples.

Some PubMed article(s) citing the expression level of this target are as follows:

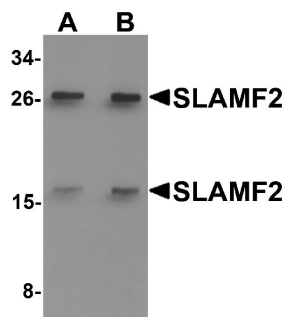
Boster Bio's internal QC testing used:

SLAMF2 antibody can be used for detection of SLAMF2 by Western blot at 1 - 2 ug/mL.

Antibody validated: Western Blot in rat samples. All other applications and species not yet tested.

Optimal dilutions for each application should be determined by the researcher.

## Anti-SLAMF2 CD48 Antibody (A03281) Images



Western blot analysis of SLAMF2 in rat lung tissue lysate with SLAMF2 antibody at (A) 1 and (B) 2 ug/mL.

## Submit a product review to Biocompare.com

Submit a review of this product to Biocompare.com to receive a \$20 Amazon.com giftcard! Your reviews help your fellow scientists make the right decisions. Thank you for your contribution.



Anti-SLAMF2 CD48 Antibody