

Anti-LMX1B Antibody

Catalog Number: A03296

About LMX1B

The LIM homeobox transcription factor 1B (LMX1B) belongs to the LIM-homeodomain family. Members of this family are known to be important for pattern formation during development. LMX1B regulates mid-hindbrain patterning; LMX1B-null mice embryos have a severe reduction in the number of midbrain dopaminergic neurons compared to wild-type. While LMX1B appears to be important for both the development and the survival of dopamine neurons, the related LMX1A is crucial for the differentiation of these cells. However, LMX1A and LMX1B function cooperatively to regulated the proliferation, specification and differentiation of midbrain dopaminergic neuronal progenitors.

Overview

Product Name	Anti-LMX1B Antibody
Reactive Species	Human, Mouse, Rat
Description	Boster Bio Anti-LMX1B Antibody (Catalog # A03296). Tested in ELISA, WB applications. This antibody reacts with Human, Mouse, Rat.
Application	ELISA, WB
Clonality	Polyclonal
Formulation	LMX1B Antibody is supplied in PBS containing 0.02% sodium azide.
Storage Instructions	LMX1B antibody can be stored at 4°C for three months and -20°C, stable for up to one year. Avoid repeated freeze-thaw cycles. Antibodies should not be exposed to prolonged high temperatures.
Host	Rabbit
Uniprot ID	O60663

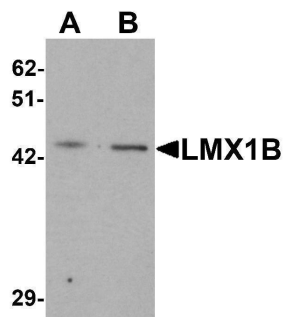
Technical Details

Immunogen	Rabbit polyclonal LMX1B antibody was raised against a 17 amino acid peptide near the carboxy terminus of human LMX1B. The immunogen is located within amino acids 280 - 330 of LMX1B.
Predicted Reactive Species	Rat
Cross Reactivity	At least three isoforms are known to exist. This antibody is predicted to not cross-react with LMX1A.
Isotype	IgG
Form	Liquid
Concentration	1 mg/mL
Purification	LMX1B Antibody is affinity chromatography purified via peptide column.

Suggested Dilutions

LMX1B antibody can be used for detection of LMX1B by Western blot at 1 - 2 ug/mL.
Antibody validated: Western Blot in mouse samples. All other applications and species not yet tested. Optimal dilutions for each application should be determined by the researcher.

Anti-LMX1B Antibody (A03296) Images



Western blot analysis of LMX1B in A-20 cell lysate with LMX1B antibody at (A) 1 and (B) 2 ug/mL.

Submit a product review to Biocompare.com

Submit a review of this product to Biocompare.com to receive a \$20 Amazon.com giftcard! Your reviews help your fellow scientists make the right decisions. Thank you for your contribution.



Anti-LMX1B Antibody

For Research Use Only. Not for use in diagnostic procedures.