

## Anti-SMARCC1 Antibody

Catalog Number: A03303

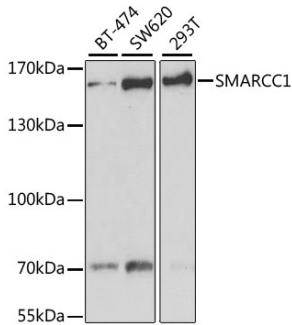
### Overview

Product Name	Anti-SMARCC1 Antibody
Reactive Species	Human
Description	Boster Bio Anti-SMARCC1 Antibody catalog # A03303. Tested in WB,IHC,IP applications. This antibody reacts with Human.
Application	IP, IHC, WB
Clonality	Polyclonal
Formulation	Rabbit IgG, 1mg/ml in PBS with 0.02% sodium azide, 50% glycerol, pH7.2
Storage Instructions	Store at -20°C for one year. For short term storage and frequent use, store at 4°C for up to one month. Avoid repeated freeze-thaw cycles.
Host	Rabbit
Uniprot ID	Q92922

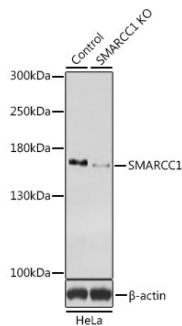
### Technical Details

Immunogen	Recombinant full length Human SMARCC1.
Isotype	IgG
Form	Liquid
Concentration	1 mg/ml
Purification	The antibody was affinity-purified from rabbit antiserum by affinity-chromatography using epitope-specific immunogen and the purity is > 95% (by SDS-PAGE).
Suggested Dilutions	WB: 1:500-1:2000 IHC: 1:50-1:200 IP: 1:50-1:200

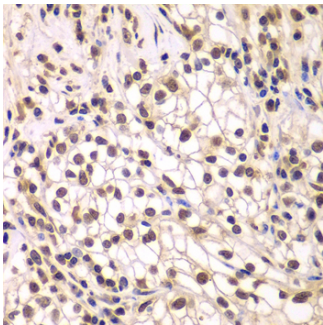
## Anti-SMARCC1 Antibody (A03303) Images



WesternBlot (WB) analysis of SMARCC1 polyclonal antibody



Western blot analysis of extracts from normal (control) and SMARCC1 knockout (KO) HeLa cells, using SMARCC1 antibody.



Immunohistochemistry of paraffin-embedded human kidney cancer using SMARCC1 antibody.

### Submit a product review to [Biocompare.com](https://www.biocompare.com)

Submit a review of this product to [Biocompare.com](https://www.biocompare.com) to receive a \$20 Amazon.com giftcard! Your reviews help your fellow scientists make the right decisions. Thank you for your contribution.



### Anti-SMARCC1 Antibody

For Research Use Only. Not for use in diagnostic procedures.