

Anti-Ajuba Antibody

Catalog Number: A03320

About AJUBA

Human AJUBA (also called JUB protein and ajuba homolog isoform 1) is a LIM domain protein suggested to bind and regulate the activity of Aurora A. Aurora A, which is involved in cell cycle regulation, is upregulated during mitosis, localizing to the centrosomes and microtubule regions proximal to the centrosomes.

Overview

Product Name	Anti-Ajuba Antibody
Reactive Species	Human
Description	Boster Bio Anti-Ajuba Antibody (Catalog # A03320). Tested in ELISA, WB applications. This antibody reacts with Human.
Conjugate	HRP
Application	ELISA, IP, WB
Clonality	Polyclonal
Formulation	0.02 M Potassium Phosphate, 0.15 M Sodium Chloride, pH 7.2, 0.01% (w/v) Sodium Azide
Storage Instructions	Store vial at -20°C prior to opening. Aliquot contents and freeze at -20°C or below for extended storage. Avoid cycles of freezing and thawing. Centrifuge product if not completely clear after standing at room temperature. This product is stable for several weeks at 4°C as an undiluted liquid. Dilute only prior to immediate use. Expiration date is one (1) year from date of opening. (Ship on dry ice.)
Host	Rabbit
Uniprot ID	Q96IF1

Technical Details

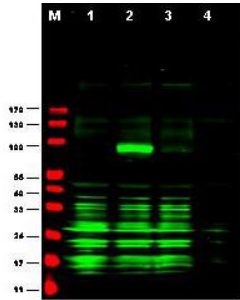
Immunogen	This affinity purified antibody was prepared from whole rabbit serum produced by repeated immunizations with a synthetic peptide corresponding aa 224-239 of Human Ajuba.
Predicted Reactive Species	Bovine, Pufferfish, Zebrafish
Isotype	IgG
Form	Liquid (sterile filtered)
Concentration	1.67 mg/mL by UV absorbance at 280 nm
Purification	This affinity purified antibody is directed against human Ajuba. The product was affinity purified

from antiserum by immunoaffinity purification. A BLAST analysis was used to suggest reactivity with this protein from human, rat, dog, mouse and chimpanzee based on 100% homology for the immunogen sequence. Cross-reactivity with Ajuba protein homologues from other sources has not been determined.

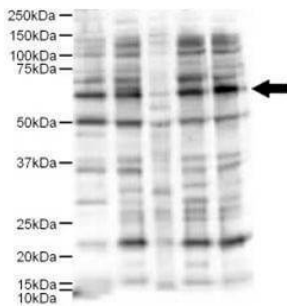
Suggested Dilutions

ELISA: 1:20,000 - 1:80,000
IP: 1:100
WB: 1:500 - 1:2,500
This affinity purified antibody has been tested for use in ELISA and by western blot. Specific conditions for reactivity should be optimized by the end user. Expect a band approximately 57 kDa in size corresponding to AJUBA by western blotting in the appropriate cell lysate or extract.

Anti-Ajuba Antibody (A03320) Images



Western blot using Boster's Affinity Purified anti-Ajuba antibody shows detection of Ajuba-RFP fusion protein in cell lysates (arrow-head). Lanes correspond to 1) vector only transfection, 2) human Ajuba-RFP, 3) mouse Ajuba-RFP, and 4) mock transfection. Approximately 50 μ g of each lysate was loaded per lane for SDS-PAGE followed by transfer onto nitrocellulose and reaction with a 1:1,700 dilution of anti-Ajuba antibody. Detection occurred using a 1:10,000 dilution of IRDye™ 800 conjugated Gt-a-Rabbit IgG [H&L] (611-132-122) for 45 min at room temperature (800 nm channel, green). Molecular weight estimation was made by comparison to prestained MW markers (indicated at left, 700 nm channel, red). IRDye™ 800 fluorescence image was captured using the Odyssey® Infrared Imaging System developed by LI-COR. IRDye is a trademark of LI-COR, Inc. Other detection systems will yield similar results.



Western blot using Boster's Affinity Purified anti-Ajuba antibody shows detection of a 57-kDa band consistent with the expected MW for Ajuba (arrowhead). Lanes correspond to 1) HeLa nuclear extract, and 2) HeLa, 3) A431, 4) Jurkat and 5) 293 whole cell lysates. Immunoprecipitation of Ajuba followed by western blotting may result in cleaner background staining. Approximately 5 μ g of each preparation was run on a SDS-PAGE and transferred onto nitrocellulose followed by reaction with a 1:500 dilution of anti-Ajuba antibody. Detection occurred using a 1:5,000 dilution of HRP-labeled Donkey anti-Rabbit IgG for 1 hour at room temperature. A chemiluminescence system was used for signal detection (Roche) using a 60-sec exposure time. Personal Communication. E. Pugacheva, Fox Chase Cancer Center, Philadelphia, PA.

Submit a product review to [Biocompare.com](https://www.biocompare.com)

Submit a review of this product to [Biocompare.com](https://www.biocompare.com) to receive a \$20 Amazon.com giftcard! Your reviews help your fellow scientists make the right decisions. Thank you for your contribution.



Anti-Ajuba Antibody

For Research Use Only. Not for use in diagnostic procedures.