

Anti-CALCR Antibody (C-term)

Catalog Number: A03322-1

About CALCR

CALCR is a high affinity receptor for the peptide hormone calcitonin and belongs to a subfamily of seven transmembrane-spanning G protein-coupled receptors. The encoded protein is involved in maintaining calcium homeostasis and in regulating osteoclast-mediated bone resorption. Polymorphisms in this gene have been associated with variations in bone mineral density and onset of osteoporosis.

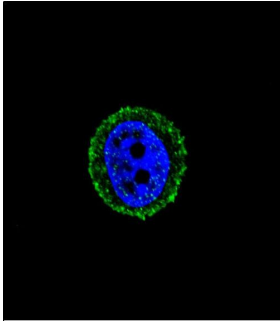
Overview

Product Name	Anti-CALCR Antibody (C-term)
Reactive Species	Human
Description	Boster Bio Anti-CALCR Antibody (C-term) (Catalog # A03322-1). Tested in WB, IF, Flow Cytometry application(s). This antibody reacts with Human.
Application	Flow Cytometry, IF, WB
Clonality	Polyclonal
Formulation	Purified polyclonal antibody supplied in PBS with 0.09% (W/V) sodium azide.
Storage Instructions	Maintain refrigerated at 2-8°C for up to 2 weeks. For long-term storage, store at -20°C in small aliquots to prevent freeze-thaw cycles.
Host	Rabbit
Uniprot ID	P30988

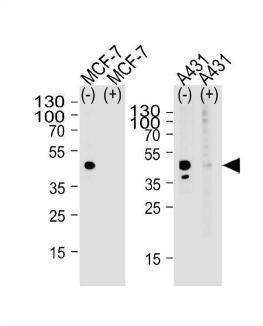
Technical Details

Immunogen	This CALCR antibody is generated from rabbits immunized with a KLH conjugated synthetic peptide between 444-474 amino acids of human CALCR.
Predicted Reactive Species	Bovine, Chicken, Mouse
Isotype	Rabbit IgG
Purification	This antibody is purified through a protein A column, followed by peptide affinity purification.
Suggested Dilutions	IF: 1:10-1:50 WB: 1:1000 FC: 1:10-1:50

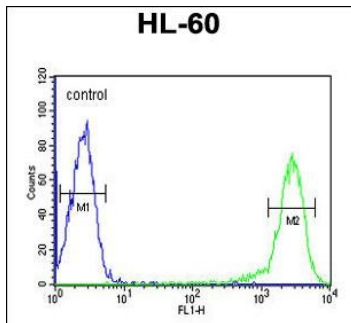
Anti-CALCR Antibody (C-term) (A03322-1) Images



Confocal immunofluorescent analysis of CALCR Antibody (C-term) with MCF-7 cell followed by Alexa Fluor® 488-conjugated goat anti-rabbit IgG (green). DAPI was used to stain the cell nuclear (blue).



Western blot analysis of lysate from MCF-7, A431 cell line, using CALCR Antibody (C-term) with(+) or without(-) peptides. A03322-1 was diluted at 1:1000 at each lane. A goat anti-rabbit (HRP) at 1:5000 dilution was used as the secondary antibody. Lysate at 35ug per lane.



CALCR Antibody (C-term) flow cytometric analysis of HL-60 cells (right histogram) compared to a negative control cell (left histogram). FITC-conjugated goat-anti-rabbit secondary antibodies were used for the analysis.

Submit a product review to Biocompare.com

Submit a review of this product to Biocompare.com to receive a \$20 Amazon.com giftcard! Your reviews help your fellow scientists make the right decisions. Thank you for your contribution.



Anti-CALCR Antibody (C-term)

For Research Use Only. Not for use in diagnostic procedures.