

## Anti-LXR-A NR1H3 Antibody

Catalog Number: A03331

### About NR1H3

LXR-A belongs to the Liver X Receptor family that encodes highly homologous transcription factors. Like the highly homologous LXR-B, LXR-A forms heterodimers with the retinoic acid receptor RXRalpha, function as sensors for cellular oxysterols which when activated, increase the expression of genes that control sterol and fatty acid metabolism and homeostasis. Recent experiments have indicated that the LXRs can also modulate both innate and adaptive immune responses. Human and mouse tumors produce LXR ligands that inhibit CCR7 expression on maturing dendritic cells (DCs), thereby allowing tumor immuneescape. In mouse models, it was shown that ablating LXR-A signaling led to an immune-mediated strong inhibition of tumor growth, suggesting that manipulation of this pathway may be a viable anti-cancer approach.

### Overview

Product Name	Anti-LXR-A NR1H3 Antibody
Reactive Species	Human, Mouse, Rat
Description	Boster Bio Anti-LXR-A NR1H3 Antibody (Catalog # A03331). Tested in ELISA, WB, IHC-P, IF applications. This antibody reacts with Human, Mouse, Rat.
Application	ELISA, IF, IHC-P, WB
Clonality	Polyclonal
Formulation	LXR-A Antibody is supplied in PBS containing 0.02% sodium azide.
Storage Instructions	LXR-A antibody can be stored at 4°C for three months and -20°C, stable for up to one year. Avoid repeated freeze-thaw cycles. Antibodies should not be exposed to prolonged high temperatures.
Host	Rabbit
Uniprot ID	Q13133

### Technical Details

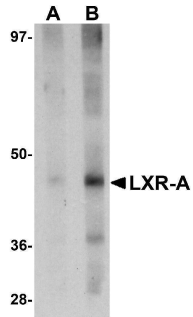
Immunogen	LXR-A antibody was raised against a 15 amino acid synthetic peptide from near the amino terminus human LXR-A. The immunogen is located within amino acids 50 - 100 of LXR-A.
Predicted Reactive Species	Rat
Isotype	IgG
Form	Liquid
Concentration	1 mg/mL
Purification	LXR-A Antibody is affinity chromatography purified via peptide column.

**Suggested Dilutions**

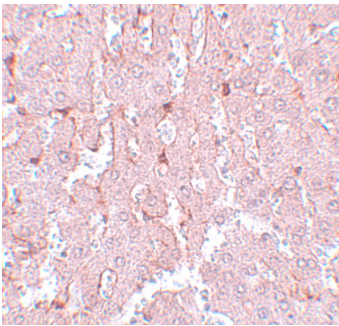
LXR-A antibody can be used for detection of LXR-A by Western blot at 1 - 2 ug/mL. Antibody can also be used for immunohistochemistry starting at 5 ug/mL. For immunofluorescence start at 20 ug/mL.

Antibody validated: Western Blot in rat samples; Immunohistochemistry in rat samples and Immunofluorescence in rat samples. All other applications and species not yet tested. Optimal dilutions for each application should be determined by the researcher.

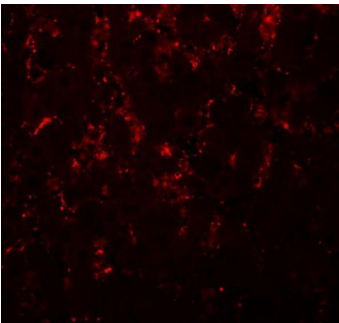
## Anti-LXR-A NR1H3 Antibody (A03331) Images



Western blot analysis of LXR-A in rat liver tissue lysate with LXR-A antibody at (A) 1 and (B) 2 ug/mL.



Immunohistochemistry of LXR-A in rat liver tissue with LXR-A antibody at 5 ug/mL.



Immunofluorescence of LXR-A in rat liver tissue with LXR-A antibody at 20 ug/mL.

### Submit a product review to [Biocompare.com](https://www.biocompare.com)

Submit a review of this product to [Biocompare.com](https://www.biocompare.com) to receive a \$20 Amazon.com giftcard! Your reviews help your fellow scientists make the right decisions. Thank you for your contribution.



Anti-LXR-A NR1H3 Antibody

For Research Use Only. Not for use in diagnostic procedures.