

Anti-AFAP1L2 Antibody

Catalog Number: A03350

About AFAP1L2

AFAP1L2, also known as XB130, is structurally similar to actin-filament-associated protein (AFAP), containing several SH2- and SH3-binding motifs, two pleckstrin homology domains, a coiled-coil region, and many potential phosphorylation sites. It interacts with and is phosphorylated by c-Src tyrosine kinase. Suppression of AFAP1L2 via siRNA reduced Src activity, IL-8 production, EGF-induced phosphorylation of Akt and GSK3beta, and altered cell cycles in human lung epithelial cells suggesting that AFAP1L2 plays a role as an adaptor in the regulation of Src signal transduction and multiple cellular functions. Recent experiments have shown that AFAP1L2 is highly expressed in thyroid and is the substrate RET/PTC kinase, a thyroid-specific kinase that plays a pathogenic role in papillary thyroid cancer. Down-regulation of AFAP1L2 in these cancer cells reduced Akt activity, inhibiting cell-cycle progression and cancer cell survival in suspension, indicating that AFAP1L2 may be a valuable target in thyroid cancer therapy. At least four isoforms of AFAP1L2 are known to exist.

Overview

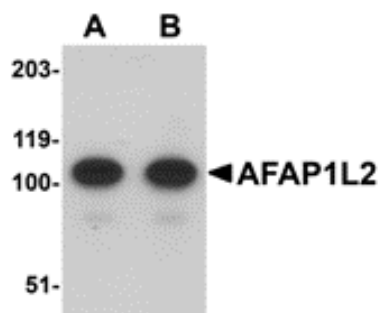
Product Name	Anti-AFAP1L2 Antibody
Reactive Species	Human, Mouse, Rat
Description	Boster Bio Anti-AFAP1L2 Antibody (Catalog # A03350). Tested in ELISA, WB, IHC-P, IF applications. This antibody reacts with Human, Mouse, Rat.
Application	ELISA, IF, IHC-P, WB
Clonality	Polyclonal
Formulation	AFAP1L2 Antibody is supplied in PBS containing 0.02% sodium azide.
Storage Instructions	AFAP1L2 antibody can be stored at 4°C for three months and -20°C, stable for up to one year. Avoid repeated freeze-thaw cycles. Antibodies should not be exposed to prolonged high temperatures.
Host	Rabbit
Uniprot ID	Q8N4X5

Technical Details

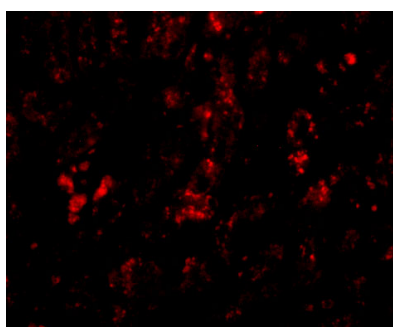
Immunogen	AFAP1L2 antibody was raised against a 15 amino acid synthetic peptide near the carboxy terminus of human AFAP1L2. The immunogen is located within the last 50 amino acids of AFAP1L2.
Predicted Reactive Species	Bovine
Isotype	IgG
Form	Liquid
Concentration	1 mg/mL

Purification	AFAP1L2 Antibody is affinity chromatography purified via peptide column.
Suggested Dilutions	AFAP1L2 antibody can be used for detection of AFAP1L2 by Western blot at 1 - 2 ug/mL. Antibody can also be used for immunohistochemistry starting at 2.5 ug/mL. For immunofluorescence start at 20 ug/mL. Antibody validated: Western Blot in mouse samples; Immunohistochemistry in human samples and Immunofluorescence in human samples. All other applications and species not yet tested. Optimal dilutions for each application should be determined by the researcher.

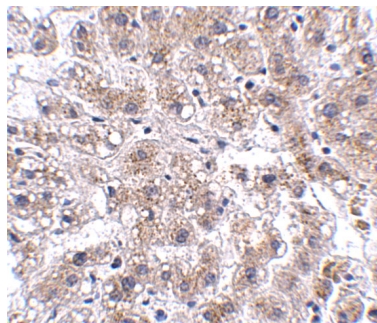
Anti-AFAP1L2 Antibody (A03350) Images



Western blot analysis of AFAP1L2 in mouse liver tissue lysate with AFAP1L2 antibody at (A) 1 and (B) 2 ug/mL.



Immunofluorescence of AFAP1L2 in human liver tissue with AFAP1L antibody at 20 ug/mL.



Immunohistochemistry of AFAP1L2 in human liver tissue with AFAP1L2 antibody at 2.5 ug/mL.

Submit a product review to [Biocompare.com](https://www.biocompare.com)

Submit a review of this product to [Biocompare.com](https://www.biocompare.com) to receive a \$20 Amazon.com giftcard! Your reviews help your fellow scientists make the right decisions. Thank you for your contribution.



Anti-AFAP1L2 Antibody

For Research Use Only. Not for use in diagnostic procedures.