

Anti-TET3 Antibody

Catalog Number: A03371

About TET3

TET3, a member of the ten-eleven-translocation (TET) family of genes, is a methylcytosine dioxygenase that catalyzes the conversion of methylcytosine to 5-hydroxymethylcytosine and is most abundantly expressed in hematopoietic cells. Unlike the related TET2 protein, mutations in TET3 have not been observed in any myeloid malignancies. TET3 has been shown to be involved in the demethylation of zygotic DNA before the first mitosis and has been suggested to be involved in the epigenetic reprogramming of the zygotic paternal DNA following natural fertilization and may also contribute to somatic cell nuclear reprogramming during animal cloning.

Overview

Product Name	Anti-TET3 Antibody
Reactive Species	Human, Mouse, Rat
Description	Boster Bio Anti-TET3 Antibody (Catalog # A03371). Tested in ELISA, WB, IHC-P, IF applications. This antibody reacts with Human, Mouse, Rat.
Application	ELISA, IF, IHC-P, WB
Clonality	Polyclonal
Formulation	TET3 Antibody is supplied in PBS containing 0.02% sodium azide.
Storage Instructions	TET3 antibody can be stored at 4°C for three months and -20°C, stable for up to one year. Avoid repeated freeze-thaw cycles. Antibodies should not be exposed to prolonged high temperatures.
Host	Rabbit
Uniprot ID	O43151

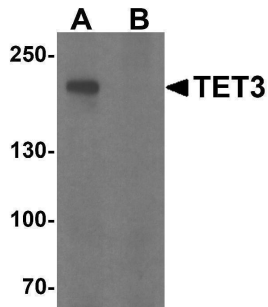
Technical Details

Immunogen	TET3 antibody was raised against a 17 amino acid synthetic peptide near the carboxy terminus of human TET3. The immunogen is located within amino acids 1520 - 1570 of TET3.
Predicted Reactive Species	Bovine
Cross Reactivity	At least three isoforms of TET3 are known to exist. TET3 antibody is predicted to not cross react with other TET proteins.
Isotype	IgG
Form	Liquid
Concentration	1 mg/mL
Purification	TET3 Antibody is affinity chromatography purified via peptide column.

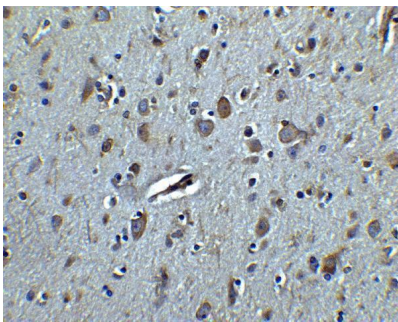
Suggested Dilutions

TET3 antibody can be used for detection of TET3 by Western blot at 1 ug/mL. Antibody can also be used for immunohistochemistry starting at 2.5 ug/mL. For immunofluorescence start at 20 ug/mL. Antibody validated: Western Blot in human samples; Immunohistochemistry in human samples and Immunofluorescence in human samples. All other applications and species not yet tested. Optimal dilutions for each application should be determined by the researcher.

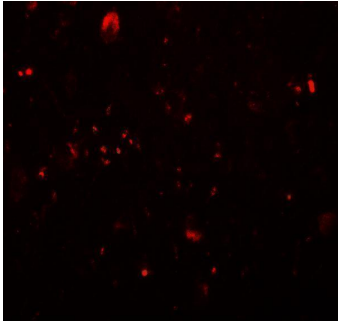
Anti-TET3 Antibody (A03371) Images



Western blot analysis of TET3 in SK-N-SH cell lysate with TET3 antibody at 1 ug/ml in (A) the absence and (B) the presence of blocking peptide.



Immunohistochemistry of TET3 in human brain tissue with TET3 antibody at 2.5 ug/ml.



Immunofluorescence of TET3 in human brain tissue with TET3 antibody at 20 ug/mL.

Submit a product review to [Biocompare.com](https://www.biocompare.com)

Submit a review of this product to [Biocompare.com](https://www.biocompare.com) to receive a \$20 Amazon.com giftcard! Your reviews help your fellow scientists make the right decisions. Thank you for your contribution.



Anti-TET3 Antibody

For Research Use Only. Not for use in diagnostic procedures.