

Anti-Calnexin (phospho-S583) CANX Antibody

Catalog Number: A03372S583

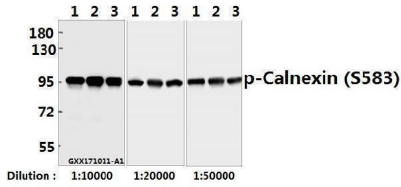
Overview

Product Name	Anti-Calnexin (phospho-S583) CANX Antibody
Reactive Species	Human, Mouse, Rat
Description	Boster Bio Anti-Calnexin (phospho-S583) CANX Antibody catalog # A03372S583. Tested in WB,IHC,IP applications. This antibody reacts with Human,Mouse,Rat.
Application	IP, IHC, WB
Clonality	Polyclonal
Formulation	Rabbit IgG, 1mg/ml in PBS with 0.02% sodium azide, 50% glycerol, pH7.2
Storage Instructions	Store at -20°C for one year. For short term storage and frequent use, store at 4°C for up to one month. Avoid repeated freeze-thaw cycles.
Host	Rabbit
Uniprot ID	P27824

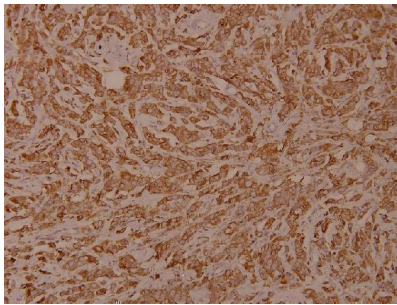
Technical Details

Immunogen	Synthetic phosphopeptide derived from human Calnexin around the phosphorylation site of Serine 583.
Isotype	IgG
Form	Liquid
Concentration	1 mg/ml
Purification	The antibody was affinity-purified from rabbit antiserum by affinity-chromatography using epitope-specific immunogen and the purity is > 95% (by SDS-PAGE).
Suggested Dilutions	WB: 1:10000-1:50000 IHC: 1:50-1:100 0 IP: 1:50-1:200

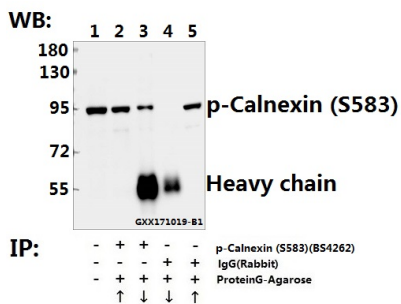
Anti-Calnexin (phospho-S583) CANX Antibody (A03372S583) Images



Western blot (WB) analysis of Calnexin (phospho-S583) pAb at 1:10000 to 1:50000 dilution Lane1:HEK293T whole cell lysate(40ug) Lane2:SGC7901 whole cell lysate(40ug) Lane3:A375 whole cell lysate(40ug)



Immunohistochemistry (IHC) analyzes of p-Calnexin (S583) pAb in paraffin-embedded human breast carcinoma tissue at 1:100.



Immunoprecipitation of L02 whole cell lysate using Calnexin (phospho-S583) pAb (Sepharose Bead Conjugate) #BD0047(lane 2 and lane 3) and Nonspecific IgG Control (Sepharose Bead Conjugate)#BD0047 (lane 4 and lane 5) .Lane 1 is 20% input. The western blot was probed using Calnexin (phospho-S583) pAb #BS4262. "↑"□supernatant□; "↓"□deposition□

Submit a product review to Biocompare.com

Submit a review of this product to Biocompare.com to receive a \$20 Amazon.com giftcard! Your reviews help your fellow scientists make the right decisions. Thank you for your contribution.



Anti-Calnexin (phospho-S583) CANX Antibody

For Research Use Only. Not for use in diagnostic procedures.