

## Anti-Autophagy-related protein 9B ATG9B Antibody

Catalog Number: A03381

### About ATG9B

Autophagy, the process of bulk degradation of cellular proteins through an autophagosomic-lysosomal pathway is important for normal growth control and may be defective in tumor cells. It is involved in the preservation of cellular nutrients under starvation conditions as well as the normal turnover of cytosolic components. This process is negatively regulated by TOR (Target of rapamycin) through phosphorylation of autophagy protein APG1. ATG9B plays a role in autophagy and it's highly expressed in placenta and pituitary gland.

### Overview

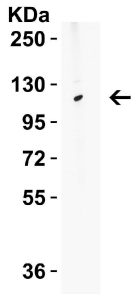
Product Name	Anti-Autophagy-related protein 9B ATG9B Antibody
Reactive Species	Human, Mouse, Rat
Description	Boster Bio Anti-Autophagy-related protein 9B ATG9B Antibody (Catalog # A03381). Tested in ELISA, WB, ICC, IF applications. This antibody reacts with Human, Mouse, Rat.
Application	ELISA, IF, ICC, WB
Clonality	Polyclonal
Formulation	ATG9B Antibody is supplied in PBS containing 0.02% sodium azide.
Storage Instructions	ATG9B antibody can be stored at 4°C for three months and -20°C, stable for up to one year. Avoid repeated freeze-thaw cycles. Antibodies should not be exposed to prolonged high temperatures.
Host	Rabbit
Uniprot ID	Q674R7

### Technical Details

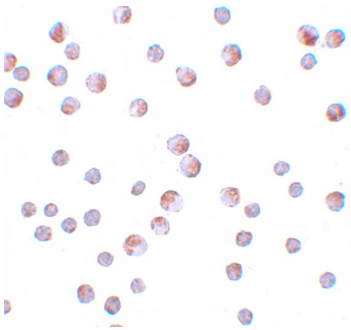
Immunogen	ATG9B antibody was raised against a 17 amino acid synthetic peptide near the carboxy terminus of human ATG9B. The immunogen is located within amino acids 850 - 900 of ATG9B.
Predicted Reactive Species	Rat
Isotype	IgG
Form	Liquid
Concentration	1 mg/mL
Purification	ATG9B Antibody is affinity chromatography purified via peptide column.
Suggested Dilutions	ATG9B antibody can be used for detection of ATG9B by Western blot at 1 - 2 ug/mL. Antibody can also be used for immunocytochemistry starting at 10 ug/mL. For immunofluorescence start at 20 ug/mL.

Antibody validated: Western Blot in human samples; Immunocytochemistry in human samples and Immunofluorescence in human samples. All other applications and species not yet tested. Optimal dilutions for each application should be determined by the researcher.

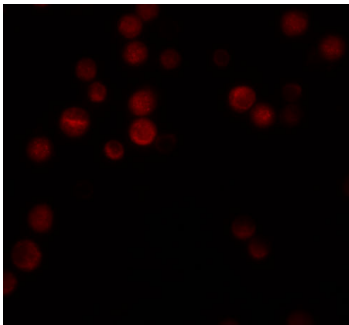
## Anti-Autophagy-related protein 9B ATG9B Antibody (A03381) Images



WB Validation in Human Tonsil Loading: 15 ug of human tonsil lysate. Antibodies: ATG9B A03381, 2 ug/mL, 1 h incubation at RT in 5% NFDN/TBST. Secondary: Goat Anti-Rabbit IgG HRP conjugate at 1:10000 dilution.



Immunocytochemistry of ATG9B in HeLa cells with ATG9B antibody at 10 ug/mL.



Immunofluorescence of ATG9B in HeLa cells with ATG9B antibody at 20 ug/mL.

### Submit a product review to [Biocompare.com](https://www.biocompare.com)

Submit a review of this product to [Biocompare.com](https://www.biocompare.com) to receive a \$20 Amazon.com giftcard! Your reviews help your fellow scientists make the right decisions. Thank you for your contribution.



Anti-Autophagy-related protein 9B ATG9B Antibody

For Research Use Only. Not for use in diagnostic procedures.