

Anti-GABARAPL1-Specific Antibody

Catalog Number: A03382-1

About GABARAPL1

Enables Tat protein binding activity and ubiquitin protein ligase binding activity. Predicted to be involved in autophagosome assembly; autophagy of mitochondrion; and cellular response to nitrogen starvation. Located in autophagosome. Colocalizes with mitochondrion.

Overview

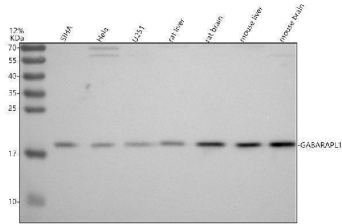
Product Name	Anti-GABARAPL1-Specific Antibody
Reactive Species	Human, Mouse, Rat
Description	Boster Bio Anti-GABARAPL1-Specific Antibody catalog # A03382-1. Tested in WB, IHC, ICC, IF, IP, Flow Cytometry, ELISA applications. This antibody reacts with Human, Mouse, Rat.
Application	ELISA, Flow Cytometry, IP, IF, IHC, ICC, WB
Clonality	Polyclonal
Formulation	500 ug/ml antibody with PBS, 0.02% NaN ₃ , 1 mg stabilizing protein and 50% glycerol *This antibody is supplied in a stabilized formulation. Compatibility with conjugation reactions depends on the chemistry of the conjugation method used. For conjugation methods that are not compatible with the stabilizing components present in this formulation, a carrier-free antibody format is required.
Storage Instructions	12 months from date of receipt at -20°C as supplied. 6 months at 2 to 8°C after reconstitution. Avoid repeated freezing and thawing.
Host	Rabbit
Uniprot ID	Q9H0R8

Technical Details

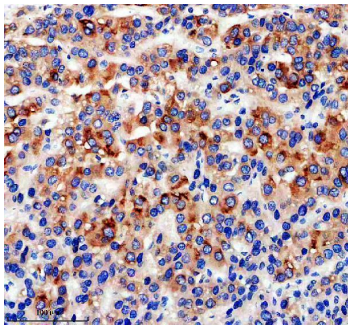
Immunogen	E.coli-derived human GABARAPL1-Specific recombinant protein (Position: M1-E112).
Form	Liquid
Concentration	500 ug/ml
Purification	Immunogen affinity purified.
Suggested Dilutions	Western blot, 1:500-2000 Immunohistochemistry, 1:50-400 Immunocytochemistry/Immunofluorescence, 1:50-400 Immunoprecipitation, 1:50 Flow Cytometry (Fixed), 1-3ug/1x10 ⁶ cells ELISA, 1:100-1000



Anti-GABARAPL1-Specific Antibody (A03382-1) Images



Western blot analysis of GABARAPL1-Specific using anti-GABARAPL1-Specific antibody (A03382-1). Electrophoresis was performed on a 12% SDS-PAGE gel at 80V (Stacking gel) / 120V (Resolving gel) for 2 hours. The sample well of each lane was loaded with 30 ug of sample under reducing conditions. Lane 1: human SiHa whole cell lysates, Lane 2: human HeLa whole cell lysates, Lane 3: human U251 whole cell lysates, Lane 4: rat liver tissue lysates, Lane 5: rat brain tissue lysates, Lane 6: mouse liver tissue lysates, Lane 7: mouse brain tissue lysates. After electrophoresis, proteins were transferred to a nitrocellulose membrane at 150 mA for 50-90 minutes. Blocked the membrane with 5% non-fat milk/TBS for 1.5 hour at RT. The membrane was incubated with rabbit anti-GABARAPL1-Specific antigen affinity purified polyclonal antibody (A03382-1) at 1:1000 overnight at 4°C, then washed with TBS-0.1%Tween 3 times with 5 minutes each and probed with a goat anti-rabbit IgG-HRP secondary antibody at a dilution of 1:5000 for 1.5 hour at RT. The signal is developed using an ECL Plus Western Blotting Substrate (Catalog # AR1196-200) with Tanon 5200 system. A specific band was detected for GABARAPL1-Specific at approximately 19 kDa. The expected band size for GABARAPL1-Specific is at 14 kDa.



IHC analysis of GABARAPL1-Specific using anti-GABARAPL1-Specific antibody (A03382-1). GABARAPL1-Specific was detected in a paraffin-embedded section of human liver cancer tissue. Heat mediated antigen retrieval was performed in EDTA buffer (pH 8.0, epitope retrieval solution). The tissue section was blocked with 10% goat serum. The tissue section was then incubated with 1:200 rabbit anti-GABARAPL1-Specific Antibody (A03382-1) overnight at 4°C. Peroxidase Conjugated Goat Anti-rabbit IgG was used as secondary antibody and incubated for 30 minutes at 37°C. The tissue section was developed using HRP Conjugated Rabbit IgG Super Vision Assay Kit (Catalog # SV0002) with DAB as the chromogen.

Submit a product review to [Biocompare.com](https://www.biocompare.com)

Submit a review of this product to [Biocompare.com](https://www.biocompare.com) to receive a \$20 Amazon.com giftcard! Your reviews help your fellow scientists make the right decisions. Thank you for your contribution.



Anti-GABARAPL1-Specific Antibody

For Research Use Only. Not for use in diagnostic procedures.