

Anti-SmarcAL1 Antibody

Catalog Number: A03383

About SMARCAL1

SmarcAL1 (SWI/SNF-related matrix-associated actin-dependent regulator of chromatin a-like 1) is also known as HARP, HepA Related Protein, HHARP, SMARCA like Protein 1 and SWI/SNF Related. SmarcAL1 is a member of the SWI/SNF family of proteins. Members of this family have helicase and ATPase activities and are thought to regulate transcription of certain genes by altering the chromatin structure around those genes. The encoded protein shows sequence similarity to the E. coli RNA polymerase-binding protein HepA. Mutations in this gene are a cause of Schimke immunosseous dysplasia (SIOD), an autosomal recessive disorder with the diagnostic features of spondyloepiphyseal dysplasia, renal dysfunction, and T-cell immunodeficiency.

Overview

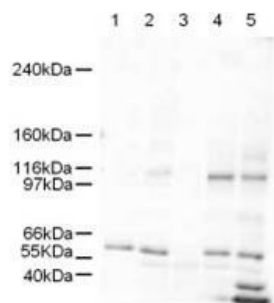
Product Name	Anti-SmarcAL1 Antibody
Reactive Species	Human
Description	Boster Bio Anti-SmarcAL1 Antibody (Catalog # A03383). Tested in ELISA, WB applications. This antibody reacts with Human.
Application	ELISA, WB
Clonality	Polyclonal
Formulation	0.02 M Potassium Phosphate, 0.15 M Sodium Chloride, pH 7.2, 0.01% (w/v) Sodium Azide
Storage Instructions	Store vial at -20°C prior to opening. Aliquot contents and freeze at -20°C or below for extended storage. Avoid cycles of freezing and thawing. Centrifuge product if not completely clear after standing at room temperature. This product is stable for several weeks at 4°C as an undiluted liquid. Dilute only prior to immediate use. Expiration date is one (1) year from date of opening. (Ship on dry ice.)
Host	Rabbit
Uniprot ID	Q9NZC9

Technical Details

Immunogen	This affinity purified antibody was prepared from whole rabbit serum produced by repeated immunizations with a synthetic peptide corresponding to an internal near aa 75-100 of human SmarcAL1 protein.
Predicted Reactive Species	Chimpanzee
Cross Reactivity	No cross reactivity with other proteins.
Isotype	IgG

Form	Liquid (sterile filtered)
Concentration	2.0 mg/mL by UV absorbance at 280 nm
Purification	This affinity purified antibody is directed against human SmarCAL1 protein. The product was affinity purified from monospecific antiserum by immunoaffinity purification. A BLAST analysis was used to suggest reactivity with this protein from human based on 100% homology for the immunogen sequence. Cross-reactivity with SmarCAL1 from other sources is not expected due to significant sequence divergence within the immunogen sequence.
Suggested Dilutions	ELISA: 1:16,000 - 1:64,000 WB: 1:500 - 1:3,000 This affinity purified antibody has been tested for use in ELISA and by western blot. Specific conditions for reactivity should be optimized by the end user. Expect a band approximately 106 kDa in size corresponding to SmarCAL1 by western blotting in the appropriate cell lysate or extract.

Anti-SmarcAL1 Antibody (A03383) Images



Western blot using Boster's Affinity Purified anti-SmarcAL1 antibody shows detection of a band ~106 kDa band corresponding to SmarcAL1 in human derived cultured cell lysates. Lane 1: HeLa nuclear extract , Lane 2: HeLa WC , Lane 3: A431 WC , Lane 4: Jurkat WC , and Lane 5: 293 WC . Approximately 5 μ g of each lysates was run on a SDS-PAGE and transferred onto nitrocellulose followed by reaction with a 1:500 dilution of anti-SmarcAL1 antibody. Signal was detected using standard techniques. SmarcAL1 is the band seen between the 97 and 116kD markers.

Submit a product review to [Biocompare.com](https://www.biocompare.com)

Submit a review of this product to [Biocompare.com](https://www.biocompare.com) to receive a \$20 Amazon.com giftcard! Your reviews help your fellow scientists make the right decisions. Thank you for your contribution.



Anti-SmarcAL1 Antibody

For Research Use Only. Not for use in diagnostic procedures.