

Anti-E3 SUMO-protein ligase CBX4 CBX4 Antibody

Catalog Number: A03388

About CBX4

Polycomb group (PcG) proteins are chromatin-associated proteins which are important for embryonic and adult stem cell self-renewal and maintenance. At least two distinct human PcG complexes have been identified. Polycomb repressive complex I (PRC1) contains CBX4/Pc2, HPH1 and RING domain-containing proteins (RING1, RING2 and BMI1). CBX4 (Chromobox protein homolog 4 or PC2), which functions as a transcriptional suppressor, is a candidate of KyoT2-binding proteins. It is a E3 SUMO-protein ligase which facilitates SUMO1 conjugation. Depletion of CBX4 results in decreased cellular resistance to ionizing radiation. CBX4 is directly involved in the cellular response to DNA damage.

Overview

Product Name	Anti-E3 SUMO-protein ligase CBX4 CBX4 Antibody
Reactive Species	Human, Mouse, Rat
Description	Boster Bio Anti-E3 SUMO-protein ligase CBX4 CBX4 Antibody (Catalog # A03388). Tested in ELISA, WB, IF applications. This antibody reacts with Human, Mouse, Rat.
Application	ELISA, IF, WB
Clonality	Polyclonal
Formulation	CBX4 Antibody is supplied in PBS containing 0.02% sodium azide.
Storage Instructions	CBX4 antibody can be stored at 4°C for three months and -20°C, stable for up to one year. Avoid repeated freeze-thaw cycles. Antibodies should not be exposed to prolonged high temperatures.
Host	Rabbit
Uniprot ID	O00257

Technical Details

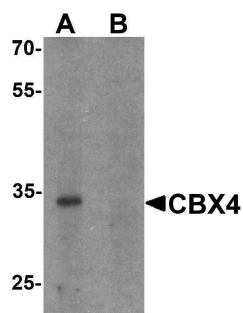
Immunogen	CBX4 antibody was raised against a 17 amino acid synthetic peptide near the amino terminus of human CBX4. The immunogen is located within amino acids 50 - 100 of CBX4.
Predicted Reactive Species	Rat
Cross Reactivity	Two alternatively spliced transcript variants have been observed.
Isotype	IgG
Form	Liquid
Concentration	1 mg/mL
Purification	CBX4 Antibody is affinity chromatography purified via peptide column.

Suggested Dilutions

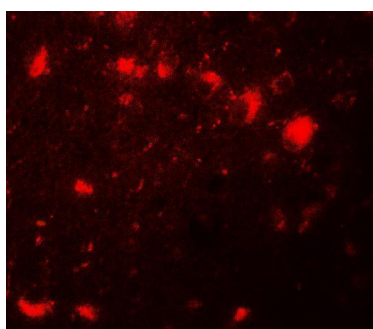
CBX4 antibody can be used for detection of CBX4 by Western blot at 1 ug/mL. For immunofluorescence start at 20 ug/mL.

Antibody validated: Western Blot in human samples and Immunofluorescence in human samples. All other applications and species not yet tested. Optimal dilutions for each application should be determined by the researcher.

Anti-E3 SUMO-protein ligase CBX4 CBX4 Antibody (A03388) Images



Western blot analysis of CBX4 in human brain tissue lysate with CBX4 antibody at 1 ug/ml in (A) the absence and (B) the presence of blocking peptide.



Immunofluorescence of CBX4 in human brain tissue with CBX4 antibody at 20 ug/mL.

Submit a product review to [Biocompare.com](https://www.biocompare.com)

Submit a review of this product to [Biocompare.com](https://www.biocompare.com) to receive a \$20 Amazon.com giftcard! Your reviews help your fellow scientists make the right decisions. Thank you for your contribution.



Anti-E3 SUMO-protein ligase CBX4 CBX4 Antibody

For Research Use Only. Not for use in diagnostic procedures.