

## Anti-CARD8 Antibody

Catalog Number: A03404-1

### About CARD8

Apoptosis is related to many diseases and development. Cell death signals are transduced by death domain (DD), death effector domain (DED), and caspase recruitment domain (CARD) containing molecules. CARD containing proteins include some caspases, Apaf-1, CARD4, IAPs, RICK, ARC, RAIDD, BCL-10, and ASC. A novel CARD-containing protein was recently identified and designated CARD8. This protein interacts with DRAL, a p53-responsive protein implicated in the induction of apoptosis, and caspase-1 and its related proteins ICEBERG and pseudo-ICE. Although there are conflicting reports on whether CARD8 acts a pro- or anti-apoptotic protein, it has been suggested that it functions as an adaptor molecule regulating caspase-1 and NF-kappaB activation.

### Overview

Product Name	Anti-CARD8 Antibody
Reactive Species	Human
Description	Boster Bio Anti-CARD8 Antibody (Catalog # A03404-1). Tested in ELISA, WB, ICC, IF applications. This antibody reacts with Human.
Application	ELISA, IF, ICC, WB
Clonality	Polyclonal
Formulation	CARD8 Antibody is supplied in PBS containing 0.02% sodium azide.
Storage Instructions	Antibody can be stored at 4°C up to one year. Antibodies should not be exposed to prolonged high temperatures.
Host	Rabbit
Uniprot ID	Q9Y2G2

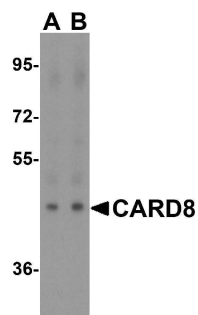
### Technical Details

Immunogen	CARD8 antibody was raised against a synthetic peptide corresponding to amino acids at the C-terminus of human CARD8. The immunogen is located within the last 50 amino acids of CARD8.
Predicted Reactive Species	Rat
Isotype	IgG
Form	Liquid
Concentration	1 mg/mL
Purification	CARD8 Antibody is affinity chromatography purified via peptide column.

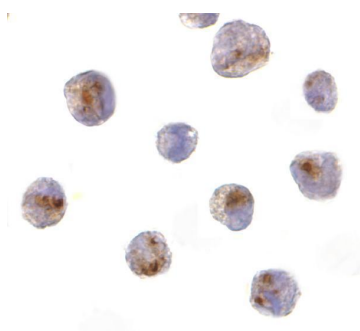
Suggested Dilutions

CARD8 antibody can be used for detection of CARD8 by Western blot at 1 -2 ug/mL. An approximate 45 kDa can be detected. Antibody can also be used for immunocytochemistry starting at 10 ug/mL. For immunofluorescence start at 20 ug/mL.  
Antibody validated: Western Blot in human samples; Immunocytochemistry in human samples and Immunofluorescence in human samples. All other applications and species not yet tested. Optimal dilutions for each application should be determined by the researcher.

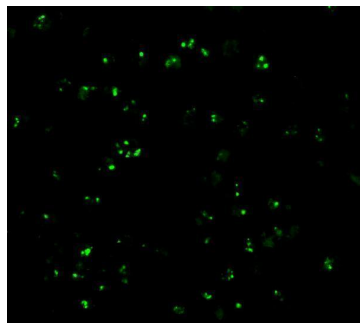
## Anti-CARD8 Antibody (A03404-1) Images



Western blot analysis of CARD8 expression in human lung tissue lysate with CARD8 antibody at (A) 1 and (B) 2 ug/ml.



Immunocytochemistry of CARD8 in K562 cells with CARD8 antibody at 10 ug/mL.



Immunofluorescence of CARD8 in K562 cells with CARD8 antibody at 20 ug/mL.

### Submit a product review to [Biocompare.com](https://www.biocompare.com)

Submit a review of this product to [Biocompare.com](https://www.biocompare.com) to receive a \$20 Amazon.com giftcard! Your reviews help your fellow scientists make the right decisions. Thank you for your contribution.



Anti-CARD8 Antibody

For Research Use Only. Not for use in diagnostic procedures.