

## Anti-ERF (E520) Antibody

Catalog Number: A03411-1

### About ERF

The protein encoded by this gene is a member of the keratin gene family. The keratins are intermediate filament proteins responsible for the structural integrity of epithelial cells and are subdivided into cytokeratins and hair keratins. Most of the type I cytokeratins consist of acidic proteins which are arranged in pairs of heterotypic keratin chains and are clustered in a region of chromosome 17q12-q21. This keratin has been coexpressed with keratin 14 in a number of epithelial tissues, including esophagus, tongue, and hair follicles. Mutations in this gene are associated with type 1 pachyonychia congenita, non-epidermolytic palmoplantar keratoderma and unilateral palmoplantar verrucous nevus.

Qian Wang, J. Virol., Jan 2004; 78: 821 - 833. RD Paladini,  
RD Paladini, J. Cell Biol., Feb 1996; 132: 381.  
M.K. Shamsheer, Hum. Mol. Genet., Oct 1995; 4: 1875 - 1881.  
Ying-Nai Wang, Mol. Pharmacol., Jan 2006; 69: 85 - 98.

### Overview

Product Name	Anti-ERF (E520) Antibody
Reactive Species	Human, Mouse
Description	Boster Bio Anti-ERF (E520) Antibody catalog # A03411-1. Tested in IHC applications. This antibody reacts with Human,Mouse.
Application	IHC
Clonality	Polyclonal
Formulation	Rabbit IgG, 1mg/ml in PBS with 0.02% sodium azide, 50% glycerol, pH7.2
Storage Instructions	Store at -20°C for one year. For short term storage and frequent use, store at 4°C for up to one month. Avoid repeated freeze-thaw cycles.
Host	Rabbit
Uniprot ID	P50548

### Technical Details

Immunogen	Synthesized peptide derived from human Maspin
Predicted Reactive Species	Boar, Bovine, Canine, Golden Hamster
Isotype	IgG
Form	Liquid

Concentration	1 mg/ml
Purification	The antibody was affinity-purified from rabbit antiserum by affinity-chromatography using epitope-specific immunogen and the purity is > 95% (by SDS-PAGE).
Suggested Dilutions	<p>Dilute the sample so that the expected range of concentrations fall within the detection range of this kit.</p> <p>If the expected range of concentration is unknown, a pilot test should be conducted to decide the optimal dilution ratio for your samples.</p> <p>Some PubMed article(s) citing the expression level of this target are as follows:</p> <p>Boster Bio's internal QC testing used:</p> <p>IHC: 1:50-1:200</p>

## Anti-ERF (E520) Antibody (A03411-1) Images

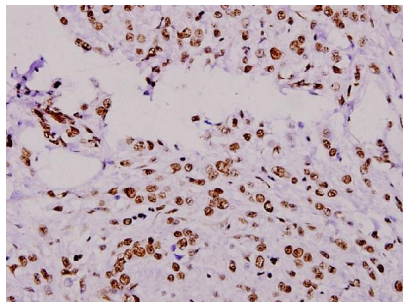


Figure 1. Immunohistochemistry validation of ERF using Anti-ERF (E520) Antibody (A03411-1).

Immunohistochemistry (IHC) analyzes of ERF (E520) pAb in paraffin-embedded human breast carcinoma tissue at 1:100. For more protocol information of IHC

## Submit a product review to Biocompare.com

Submit a review of this product to Biocompare.com to receive a \$20 Amazon.com giftcard! Your reviews help your fellow scientists make the right decisions. Thank you for your contribution.



Anti-ERF (E520) Antibody