

Anti-ERF (phospho-T526) Antibody

Catalog Number: A03411T526

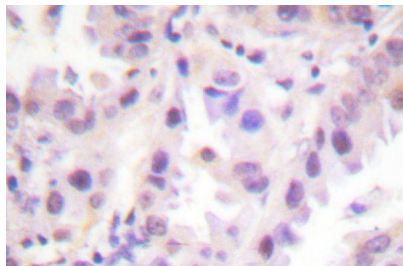
Overview

| | |
|----------------------|---|
| Product Name | Anti-ERF (phospho-T526) Antibody |
| Reactive Species | Human, Mouse, Rat |
| Description | Boster Bio Anti-ERF (phospho-T526) Antibody catalog # A03411T526. Tested in IHC,IF applications. This antibody reacts with Human,Mouse,Rat. |
| Application | IF, IHC |
| Clonality | Polyclonal |
| Formulation | Rabbit IgG, 1mg/ml in PBS with 0.02% sodium azide, 50% glycerol, pH7.2 |
| Storage Instructions | Store at -20°C for one year. For short term storage and frequent use, store at 4°C for up to one month. Avoid repeated freeze-thaw cycles. |
| Host | Rabbit |
| Uniprot ID | P50548 |

Technical Details

| | |
|---------------------|---|
| Immunogen | Synthetic phosphopeptide derived from human ERF around the phosphorylation site of Threonine 526. |
| Isotype | IgG |
| Form | Liquid |
| Concentration | 1 mg/ml |
| Purification | The antibody was affinity-purified from rabbit antiserum by affinity-chromatography using epitope-specific immunogen and the purity is > 95% (by SDS-PAGE). |
| Suggested Dilutions | IHC: 1:50-1:200 IF: 1:50-1:200 |

Anti-ERF (phospho-T526) Antibody (A03411T526) Images



Immunohistochemistry (IHC) analysis of p-ERF (T526) pAb in paraffin-embedded human lung carcinoma tissue.

Submit a product review to [Biocompare.com](https://www.biocompare.com)

Submit a review of this product to [Biocompare.com](https://www.biocompare.com) to receive a \$20 Amazon.com giftcard! Your reviews help your fellow scientists make the right decisions. Thank you for your contribution.



Anti-ERF (phospho-T526) Antibody

For Research Use Only. Not for use in diagnostic procedures.