

## Anti-CD42d GP5 Antibody

Catalog Number: A03425

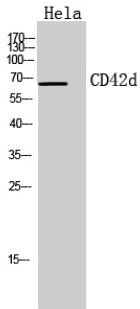
### Overview

Product Name	Anti-CD42d GP5 Antibody
Reactive Species	Human, Mouse, Rat
Description	Boster Bio Anti-CD42d GP5 Antibody catalog # A03425. Tested in WB, IHC, IF, Flow Cytometry, ELISA applications. This antibody reacts with Human, Mouse, Rat.
Application	ELISA, Flow Cytometry, IF, IHC, WB
Clonality	Polyclonal
Formulation	Liquid in PBS containing 50% glycerol, 0.5% stabilizing protein and 0.02% sodium azide. *This antibody is supplied in a stabilized formulation. Compatibility with conjugation reactions depends on the chemistry of the conjugation method used. For conjugation methods that are not compatible with the stabilizing components present in this formulation, a carrier-free antibody format is required.
Storage Instructions	Store at -20°C for one year. For short term storage and frequent use, store at 4°C for up to one month. Avoid repeated freeze-thaw cycles.
Host	Rabbit
Uniprot ID	P40197

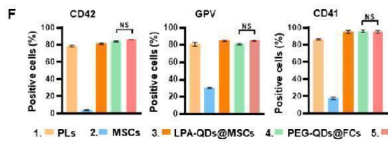
### Technical Details

Immunogen	The antiserum was produced against synthesized peptide derived from the Internal region of human GP5. AA range:331-380
Isotype	IgG
Form	Liquid
Concentration	1 mg/ml
Purification	Immunogen affinity purified
Suggested Dilutions	WB 1:500-1:2000 IHC: 1:100-1:300 ELISA 1:10000 IF 1:50-200

## Anti-CD42d GP5 Antibody (A03425) Images



Immunohistochemical analysis of paraffin-embedded human tonsils, antibody was diluted at 1:100



Western Blot analysis of HeLa cells using CD42d Polyclonal Antibody. Secondary antibody was diluted at 1:20000

### Submit a product review to Biocompare.com

Submit a review of this product to Biocompare.com to receive a \$20 Amazon.com giftcard! Your reviews help your fellow scientists make the right decisions. Thank you for your contribution.



Anti-CD42d GP5 Antibody

For Research Use Only. Not for use in diagnostic procedures.