

## Anti-TROVE2/SS-A/RO60 Antibody Picoband®

Catalog Number: A03428-1

### About RO60

Enables RNA binding activity. Involved in cellular response to interferon-alpha and regulation of gene expression. Located in cytosol and nucleoplasm. Part of ribonucleoprotein complex. The cDNA that encodes the 60-kD Ro/SSA autoantigen recognized by autoantibodies in certain lupus erythematosus (152700) and Sjogren syndrome (270150) sera was cloned and sequenced by Deutscher et al. (1988) and confirmed with minor differences by Ben-Chetrit et al. (1989).

### Overview

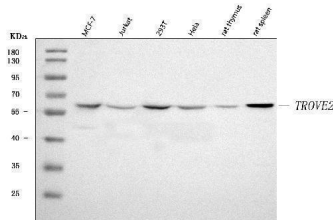
Product Name	Anti-TROVE2/SS-A/RO60 Antibody Picoband®
Reactive Species	Human, Rat
Description	Boster Bio Anti-TROVE2/SS-A/RO60 Antibody Picoband® catalog # A03428-1. Tested in ELISA, Flow Cytometry, WB applications. This antibody reacts with Human, Rat. The brand Picoband indicates this is a premium antibody that guarantees superior quality, high affinity, and strong signals with minimal background in Western blot applications. Only our best-performing antibodies are designated as Picoband, ensuring unmatched performance.
Application	ELISA, Flow Cytometry, WB
Clonality	Polyclonal
Formulation	Each vial contains 4 mg Trehalose, 0.9 mg NaCl, 0.2 mg Na <sub>2</sub> HPO <sub>4</sub> .
Storage Instructions	At -20°C for one year from date of receipt. After reconstitution, at 4°C for one month. It can also be aliquotted and stored frozen at -20°C for six months. Avoid repeated freezing and thawing.
Host	Rabbit
Uniprot ID	P10155

### Technical Details

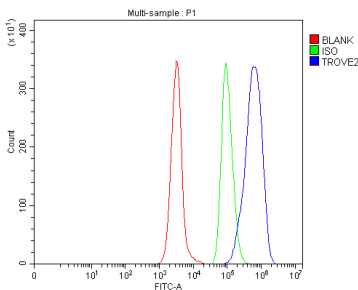
Immunogen	E.coli-derived human TROVE2/SS-A/RO60 recombinant protein (Position: K88-M419).
Recommended Detection Systems	Boster recommends Enhanced Chemiluminescent Kit with anti-Rabbit IgG (EK1002) for Western blot.
Cross Reactivity	No cross-reactivity with other proteins.
Isotype	Rabbit IgG
Form	Lyophilized
Concentration	Adding 0.2 ml of distilled water will yield a concentration of 500 µg/ml.

Purification	Immunogen affinity purified.
Suggested Dilutions	Western blot, 0.25-0.5 ug/ml, Human, Rat Flow Cytometry (Fixed), 1-3 ug/1x10 <sup>6</sup> cells, Human ELISA, 0.1-0.5 ug/ml, -

## Anti-TROVE2/SS-A/RO60 Antibody Picoband® (A03428-1) Images



Western blot analysis of TROVE2/SS-A/RO60 using anti-TROVE2/SS-A/RO60 antibody (A03428-1). Electrophoresis was performed on a 5-20% SDS-PAGE gel at 70V (Stacking gel) / 90V (Resolving gel) for 2-3 hours. The sample well of each lane was loaded with 30 ug of sample under reducing conditions. Lane 1: human MCF-7 whole cell lysates, Lane 2: human Jurkat whole cell lysates, Lane 3: human 293T whole cell lysates, Lane 4: human Hela whole cell lysates, Lane 5: rat thymus tissue lysates, Lane 6: rat spleen tissue lysates. After electrophoresis, proteins were transferred to a nitrocellulose membrane at 150 mA for 50-90 minutes. Blocked the membrane with 5% non-fat milk/TBS for 1.5 hour at RT. The membrane was incubated with rabbit anti-TROVE2/SS-A/RO60 antigen affinity purified polyclonal antibody (Catalog # A03428-1) at 0.5 ug/mL overnight at 4°C, then washed with TBS-0.1%Tween 3 times with 5 minutes each and probed with a goat anti-rabbit IgG-HRP secondary antibody at a dilution of 1:5000 for 1.5 hour at RT. The signal is developed using an Enhanced Chemiluminescent detection (ECL) kit (Catalog # EK1002) with Tanon 5200 system. A specific band was detected for TROVE2/SS-A/RO60 at approximately 60 kDa. The expected band size for TROVE2/SS-A/RO60 is at 61 kDa.



Flow Cytometry analysis of Daudi cells using anti-TROVE2/SS-A/RO60 antibody (A03428-1). Overlay histogram showing Daudi cells stained with A03428-1 (Blue line). To facilitate intracellular staining, cells were fixed with 4% paraformaldehyde and permeabilized with permeabilization buffer. The cells were blocked with 10% normal goat serum. And then incubated with rabbit anti-TROVE2/SS-A/RO60 Antibody (A03428-1, 1 ug/1x10<sup>6</sup> cells) for 30 min at 20°C. DyLight®488 conjugated goat anti-rabbit IgG (BA1127, 5-10 ug/1x10<sup>6</sup> cells) was used as secondary antibody for 30 minutes at 20°C. Isotype control antibody (Green line) was rabbit IgG (1 ug/1x10<sup>6</sup>) used under the same conditions. Unlabelled sample without incubation with primary antibody and secondary antibody (Red line) was used as a blank control.

### Submit a product review to Biocompare.com

Submit a review of this product to Biocompare.com to receive a \$20 Amazon.com giftcard! Your reviews help your fellow scientists make the right decisions. Thank you for your contribution.



Anti-TROVE2/SS-A/RO60 Antibody

For Research Use Only. Not for use in diagnostic procedures.