

Anti-Kallikrein-4 KLK4 Antibody

Catalog Number: A03430

About KLK4

Kallikreins (KLKs) belong to the serine protease family of proteolytic enzymes having diverse physiological functions (1). Kallikrein 4 (KLK4), also known as prostase or EMSP1 (enamel matrix serine protease 1), contains one peptidase S1 domain and the expression in prostate is regulated by hormone (1,2). Many kallikreins are implicated in carcinogenesis and have potential as novel cancer and other disease biomarkers (3). KLK4 may have additional roles such as functioning as one of the two major enamel proteases identified that process enamel matrix proteins. Defects in KLK4 are the cause of amelogenesis imperfecta hypomaturational type 2A1 (AI2A1) (4).

Overview

Product Name	Anti-Kallikrein-4 KLK4 Antibody
Reactive Species	Human
Description	Boster Bio Anti-Kallikrein-4 KLK4 Antibody (Catalog # A03430). Tested in ELISA, WB, IHC-P, IF applications. This antibody reacts with Human.
Application	ELISA, IF, IHC-P, WB
Clonality	Polyclonal Clone: SK7
Formulation	KLK4 Antibody is supplied in PBS containing 0.02% sodium azide.
Storage Instructions	KLK4 antibody can be stored at 4°C for three months and -20°C, stable for up to one year.
Host	Rabbit
Uniprot ID	Q9Y5K2

Technical Details

Immunogen	KLK4 antibody was raised against a 15 amino acid peptide near the center of human KLK4. The immunogen is located within amino acids 80 - 130 of KLK4.
Predicted Reactive Species	Rat
Cross Reactivity	KLK4 antibody is human specific. At least three isoforms of KLK4 are known to exist.
Isotype	IgG
Form	Liquid
Concentration	1 mg/mL
Purification	KLK4 Antibody is affinity chromatography purified via peptide column.
Suggested Dilutions	Dilute the sample so that the expected range of concentrations fall within the detection range of this

kit.

If the expected range of concentration is unknown, a pilot test should be conducted to decide the optimal dilution ratio for your samples.

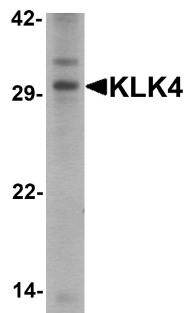
Some PubMed article(s) citing the expression level of this target are as follows:

Boster Bio's internal QC testing used:

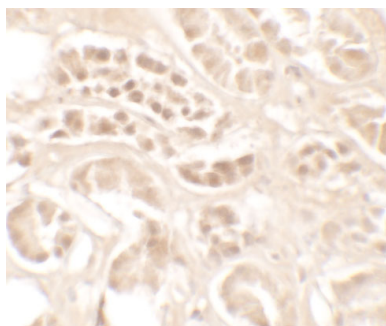
KLK4 antibody can be used for detection of KLK4 by Western blot at 1 - 2 ug/ml.

Antibody validated: Western Blot in human samples; Immunohistochemistry in human samples and Immunofluorescence in human samples. All other applications and species not yet tested. Optimal dilutions for each application should be determined by the researcher.

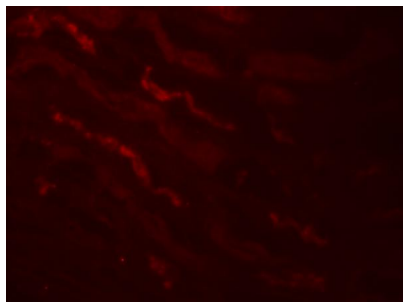
Anti-Kallikrein-4 KLK4 Antibody (A03430) Images



Western blot analysis of KLK4 in human kidney tissue lysate with KLK4 antibody at 1 ug/ml.



Immunohistochemistry of KLK4 in human kidney tissue with KLK4 antibody at 5 ug/mL.



Immunofluorescence of KLK4 in human kidney tissue with KLK4 antibody at 20 ug/mL.

Submit a product review to Biocompare.com

Submit a review of this product to Biocompare.com to receive a \$20 Amazon.com giftcard! Your reviews help your fellow scientists make the right decisions. Thank you for your contribution.



Anti-Kallikrein-4 KLK4 Antibody