

Anti-DOCK 180 (K1692) Antibody

Catalog Number: A03440

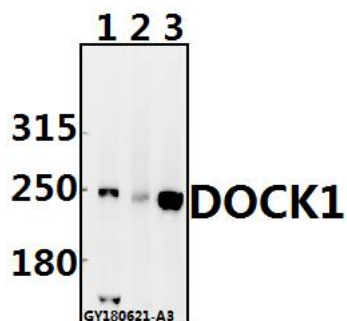
Overview

Product Name	Anti-DOCK 180 (K1692) Antibody
Reactive Species	Human, Rat
Description	Boster Bio Anti-DOCK 180 (K1692) Antibody catalog # A03440. Tested in WB,IHC applications. This antibody reacts with Human,Rat.
Application	IHC, WB
Clonality	Polyclonal
Formulation	Rabbit IgG, 1mg/ml in PBS with 0.02% sodium azide, 50% glycerol, pH7.2
Storage Instructions	Store at -20°C for one year. For short term storage and frequent use, store at 4°C for up to one month. Avoid repeated freeze-thaw cycles.
Host	Rabbit
Uniprot ID	Q14185

Technical Details

Immunogen	Synthetic peptide, corresponding to amino acids 1660-1719 of Human DOCK 180.
Isotype	IgG
Form	Liquid
Concentration	1 mg/ml
Purification	The antibody was affinity-purified from rabbit antiserum by affinity-chromatography using epitope-specific immunogen and the purity is > 95% (by SDS-PAGE).
Suggested Dilutions	WB: 1:500-1:1000 IHC: 1:50-1:200

Anti-DOCK 180 (K1692) Antibody (A03440) Images



Western blot (WB) analysis of DOCK1 pAb at 1:500 dilution
Lane1:MCF-7 whole cell lysate(40ug) Lane2:H1792 whole
cell lysate(40ug) Lane3:C6 whole cell lysate(40ug)

Submit a product review to Biocompare.com

Submit a review of this product to Biocompare.com to receive a \$20 Amazon.com giftcard! Your reviews help your fellow scientists make the right decisions. Thank you for your contribution.



Anti-DOCK 180 (K1692) Antibody

For Research Use Only. Not for use in diagnostic procedures.