

## Anti-Slc7a9 Antibody Picoband®

Catalog Number: A03445-1

### About Slc7a9

b (0,+)-type amino acid transporter 1, also known as b (0,+) $\text{AT1}$ , is a protein which in humans is encoded by the  $\text{SLC7A9}$  gene. This gene encodes a protein that belongs to a family of light subunits of amino acid transporters. This protein plays a role in the high-affinity and sodium-independent transport of cystine and neutral and dibasic amino acids, and appears to function in the reabsorption of cystine in the kidney tubule. Mutations in this gene cause non-type I cystinuria, a disease that leads to cystine stones in the urinary system due to impaired transport of cystine and dibasic amino acids. Alternate transcript variants, which encode the same protein, have been found for this gene.

### Overview

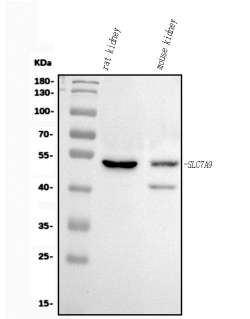
Product Name	Anti-Slc7a9 Antibody Picoband®
Reactive Species	Mouse, Rat
Description	Boster Bio Anti-Slc7a9 Antibody Picoband® catalog # A03445-1. Tested in ELISA, Flow Cytometry, WB applications. This antibody reacts with Mouse, Rat. The brand Picoband indicates this is a premium antibody that guarantees superior quality, high affinity, and strong signals with minimal background in Western blot applications. Only our best-performing antibodies are designated as Picoband, ensuring unmatched performance.
Application	ELISA, Flow Cytometry, WB
Clonality	Polyclonal
Formulation	Each vial contains 4mg Trehalose, 0.9mg NaCl, 0.2mg $\text{Na}_2\text{HPO}_4$ .
Storage Instructions	Store at $-20^\circ\text{C}$ for one year from date of receipt. After reconstitution, at $4^\circ\text{C}$ for one month. It can also be aliquotted and stored frozen at $-20^\circ\text{C}$ for six months. Avoid repeated freeze-thaw cycles.
Host	Rabbit
Uniprot ID	Q9QXA6

### Technical Details

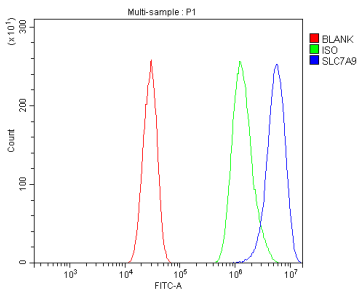
Immunogen	E.coli-derived mouse Slc7a9 recombinant protein (Position: M1-E487).
Recommended Detection Systems	Boster recommends Enhanced Chemiluminescent Kit with anti-Rabbit IgG (EK1002) for Western blot.
Cross Reactivity	No cross-reactivity with other proteins.
Isotype	Rabbit IgG
Form	Lyophilized
Concentration	Adding 0.2 ml of distilled water will yield a concentration of 500 $\mu\text{g}/\text{ml}$ .

Purification	Immunogen affinity purified.
Suggested Dilutions	Western blot, 0.25-0.5ug/ml, Mouse, Rat Flow Cytometry (Fixed), 1-3ug/1x10 <sup>6</sup> cells, Mouse ELISA, 0.1-0.5ug/ml, -

## Anti-Slc7a9 Antibody Picoband® (A03445-1) Images



Western blot analysis of Slc7a9 using anti-Slc7a9 antibody (A03445-1). Electrophoresis was performed on a 5-20% SDS-PAGE gel at 70V (Stacking gel) / 90V (Resolving gel) for 2-3 hours. The sample well of each lane was loaded with 30 ug of sample under reducing conditions. Lane 1: rat kidney tissue lysates, Lane 2: mouse kidney tissue lysates. After electrophoresis, proteins were transferred to a nitrocellulose membrane at 150 mA for 50-90 minutes. Blocked the membrane with 5% non-fat milk/TBS for 1.5 hour at RT. The membrane was incubated with rabbit anti-Slc7a9 antigen affinity purified polyclonal antibody (Catalog # A03445-1) at 0.5 ug/mL overnight at 4°C, then washed with TBS-0.1%Tween 3 times with 5 minutes each and probed with a goat anti-rabbit IgG-HRP secondary antibody at a dilution of 1:5000 for 1.5 hour at RT. The signal is developed using an Enhanced Chemiluminescent detection (ECL) kit (Catalog # EK1002) with Tanon 5200 system. A specific band was detected for Slc7a9 at approximately 53 kDa. The expected band size for Slc7a9 is at 53 kDa.



Flow Cytometry analysis of HEPA1-6 cells using anti-Slc7a9 antibody (A03445-1). Overlay histogram showing HEPA1-6 cells stained with A03445-1 (Blue line). The cells were fixed with 4% paraformaldehyde and blocked with 10% normal goat serum. And then incubated with rabbit anti-Slc7a9 Antibody (A03445-1, 1 ug/1x10<sup>6</sup> cells) for 30 min at 20°C. DyLight® 488 conjugated goat anti-rabbit IgG (BA1127, 5-10 ug/1x10<sup>6</sup> cells) was used as secondary antibody for 30 minutes at 20°C. Isotype control antibody (Green line) was rabbit IgG (1 ug/1x10<sup>6</sup>) used under the same conditions. Unlabelled sample without incubation with primary antibody and secondary antibody (Red line) was used as a blank control.

### Submit a product review to Biocompare.com

Submit a review of this product to Biocompare.com to receive a \$20 Amazon.com giftcard! Your reviews help your fellow scientists make the right decisions. Thank you for your contribution.



### Anti-Slc7a9 Antibody

For Research Use Only. Not for use in diagnostic procedures.