

Anti-Chymase CMA1 Antibody

Catalog Number: A03446

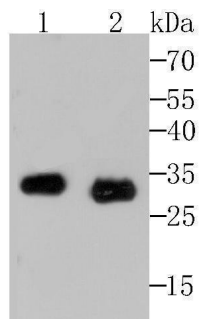
Overview

Product Name	Anti-Chymase CMA1 Antibody
Reactive Species	Human
Description	Boster Bio Anti-Chymase CMA1 Antibody catalog # A03446. Tested in WB,IHC applications. This antibody reacts with Human.
Application	IHC, WB
Clonality	Polyclonal
Formulation	Rabbit IgG, 1mg/ml in PBS with 0.02% sodium azide, 50% glycerol, pH7.2
Storage Instructions	Store at -20°C for one year. For short term storage and frequent use, store at 4°C for up to one month. Avoid repeated freeze-thaw cycles.
Host	Rabbit
Uniprot ID	P23946

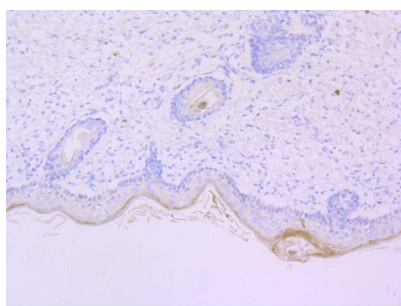
Technical Details

Immunogen	Recombinant protein
Isotype	IgG
Form	Liquid
Concentration	1 mg/ml
Purification	ProA affinity purified
Suggested Dilutions	WB: 1:500-1:2000 IHC: 1:50-1:200

Anti-Chymase CMA1 Antibody (A03446) Images



Western blot analysis of Mast Cell Chymase on rat spleen and mouse spleen tissue lysates using anti-Mast Cell Chymase antibody at 1/500 dilution.



Immunohistochemical analysis of paraffin-embedded human skin tissue using anti-Mast Cell Chymase antibody. Counterstained with hematoxylin.

Submit a product review to Biocompare.com

Submit a review of this product to Biocompare.com to receive a \$20 Amazon.com giftcard! Your reviews help your fellow scientists make the right decisions. Thank you for your contribution.



Anti-Chymase CMA1 Antibody

For Research Use Only. Not for use in diagnostic procedures.