

## Anti-NADP-dependent malic enzyme ME1 Antibody

Catalog Number: A03449

### About ME1

ME1, also known as NADP-ME, MES or HUMNDME, may play an important role as a housekeeping protein within the cell (1). ME1 is a 572 amino acid cytoplasmic protein that belongs to the malic enzyme family (2). It is expressed ubiquitously with highest expression in liver and white adipose tissue. ME1 functions as an NADP-dependent enzyme that generates NADPH for fatty acid biosynthesis (3). The activity of this enzyme, the reversible oxidative decarboxylation of malate, links the glycolytic and citric acid cycles (3,4). ME1 is regulated by both thyroid hormone levels and the amount of carbohydrates in the diet (5).

### Overview

|                      |  |
|----------------------|--|
| Product Name         | Anti-NADP-dependent malic enzyme ME1 Antibody  |
| Reactive Species     | Human, Mouse, Rat  |
| Description          | Boster Bio Anti-NADP-dependent malic enzyme ME1 Antibody (Catalog # A03449). Tested in ELISA, WB, IHC-P applications. This antibody reacts with Human, Mouse, Rat. |
| Application          | ELISA, IHC-P, WB   |
| Clonality            | Polyclonal   |
| Formulation          | ME1 Antibody is supplied in PBS containing 0.02% sodium azide.   |
| Storage Instructions | ME1 antibody can be stored at 4°C for three months and -20°C, stable for up to one year.   |
| Host                 | Rabbit   |
| Uniprot ID           | P48163   |

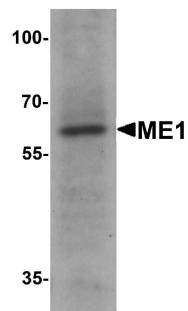
### Technical Details

|                            |  |
|----------------------------|--|
| Immunogen                  | ME1 antibody was raised against a 16 amino acid peptide near the amino terminus of human ME1. The immunogen is located within the first 50 amino acids of ME1. |
| Predicted Reactive Species | Rat  |
| Cross Reactivity           | ME1 antibody is human, mouse and rat reactive. ME1 antibody is predicted not to cross-react with ME2.  |
| Isotype                    | IgG  |
| Form                       | Liquid   |
| Concentration              | 1 mg/mL  |
| Purification               | ME1 antibody is affinity chromatography purified via peptide column.   |

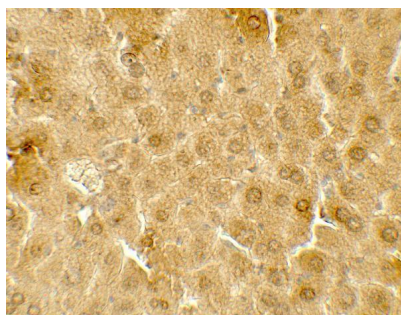
Suggested Dilutions

ME1 antibody can be used for detection of ME1 by Western blot at 1 - 2 ug/ml. Antibody can also be used for Immunohistochemistry at 5 ug/mL.  
Antibody validated: Western Blot in human samples and Immunohistochemistry in mouse samples.  
All other applications and species not yet tested. Optimal dilutions for each application should be determined by the researcher.

## Anti-NADP-dependent malic enzyme ME1 Antibody (A03449) Images



Western blot analysis of ME1 in 293 cell lysate with ME1 antibody at 1 ug/ml.



Immunohistochemistry of ME1 in mouse liver tissue with ME1 antibody at 5 ug/mL.

### Submit a product review to Biocompare.com

Submit a review of this product to Biocompare.com to receive a \$20 Amazon.com giftcard! Your reviews help your fellow scientists make the right decisions. Thank you for your contribution.



Anti-NADP-dependent malic enzyme ME1 Antibody

For Research Use Only. Not for use in diagnostic procedures.