

Anti-APC1 ANAPC1 Antibody

Catalog Number: A03471

About ANAPC1

Cell cycle regulated protein ubiquitination and degradation within subcellular domains is thought to be essential for the normal progression of mitosis. APC1, also known as mitotic checkpoint regulator (MCP1), is a highly conserved component of the anaphase promoting complex/cyclosome (APC/C), a cell cycle-regulated E3 ubiquitin ligase that controls progression through mitosis and the G1 phase of the cell cycle. APC/C is responsible for degrading anaphase inhibitors, mitotic cyclins, and spindle-associated proteins ensuring that events of mitosis take place in proper sequence. The individual APC/C components mRNA and protein levels are expressed at approximately the same levels in most tissues and cell lines, suggesting that they perform their functions as part of a complex.

Overview

Product Name	Anti-APC1 ANAPC1 Antibody
Reactive Species	Human, Mouse
Description	Boster Bio Anti-APC1 ANAPC1 Antibody (Catalog # A03471). Tested in ELISA, WB, IHC-P applications. This antibody reacts with Human, Mouse.
Application	ELISA, IHC-P, WB
Clonality	Polyclonal
Formulation	APC1 Antibody is supplied in PBS containing 0.02% sodium azide.
Storage Instructions	APC1 antibody can be stored at 4°C for three months and -20°C, stable for up to one year. Avoid repeated freeze-thaw cycles. Antibodies should not be exposed to prolonged high temperatures.
Host	Rabbit
Uniprot ID	Q9H1A4

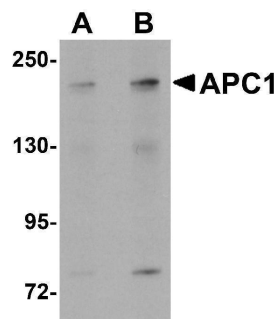
Technical Details

Immunogen	APC1 antibody was raised against a 17 amino acid synthetic peptide near the carboxy terminus of human APC1. The immunogen is located within amino acids 1810 - 1860 of APC1.
Predicted Reactive Species	Bovine, Chicken
Isotype	IgG
Form	Liquid
Concentration	1 mg/mL
Purification	APC1 Antibody is affinity chromatography purified via peptide column.

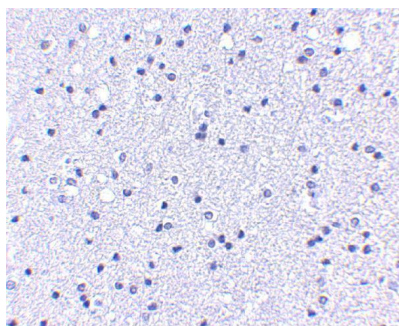
Suggested Dilutions

APC1 antibody can be used for detection of APC1 by Western blot at 1 - 2 ug/mL. Antibody can also be used for immunohistochemistry starting at 5 ug/mL.
Antibody validated: Western Blot in human samples and Immunohistochemistry in human samples.
All other applications and species not yet tested. Optimal dilutions for each application should be determined by the researcher.

Anti-APC1 ANAPC1 Antibody (A03471) Images



Western blot analysis of APC1 in SK-N-SH cell lysate with APC1 antibody at (A) 1 and (B) 2 ug/mL.



Immunohistochemistry of APC1 in human brain tissue with APC1 antibody at 5 ug/mL.

Submit a product review to [Biocompare.com](https://www.biocompare.com)

Submit a review of this product to [Biocompare.com](https://www.biocompare.com) to receive a \$20 Amazon.com giftcard! Your reviews help your fellow scientists make the right decisions. Thank you for your contribution.



Anti-APC1 ANAPC1 Antibody

For Research Use Only. Not for use in diagnostic procedures.