

Anti-Steroid hormone receptor ERR2 ESRRB Antibody

Catalog Number: A03473

About ESRRB

The estrogen-related receptor beta (ESRRB) was initially identified in mouse embryonic carcinoma stem cells and was found to be expressed exclusively in trophoblast progenitor cells between days 6.5 and 7.5 post coitum. Recent studies have shown that ESRRB is part of an POU5F1/Oct4-centered protein interaction network in embryonic stem (ES) cells. It is thought to interact with other ES transcription factors such as NANOG within this network, activating POU5F1 transcription and thereby sustaining self-renewal and pluripotency in ES cells.

Overview

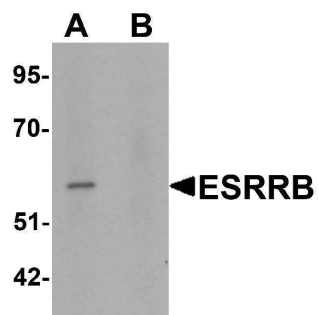
Product Name	Anti-Steroid hormone receptor ERR2 ESRRB Antibody
Reactive Species	Human
Description	Boster Bio Anti-Steroid hormone receptor ERR2 ESRRB Antibody (Catalog # A03473). Tested in ELISA, WB, IHC-P, IF applications. This antibody reacts with Human.
Application	ELISA, IF, IHC-P, WB
Clonality	Polyclonal
Formulation	ESRRB Antibody is supplied in PBS containing 0.02% sodium azide.
Storage Instructions	ESRRB antibody can be stored at 4°C for three months and -20°C, stable for up to one year. Avoid repeated freeze-thaw cycles. Antibodies should not be exposed to prolonged high temperatures.
Host	Rabbit
Uniprot ID	O95718

Technical Details

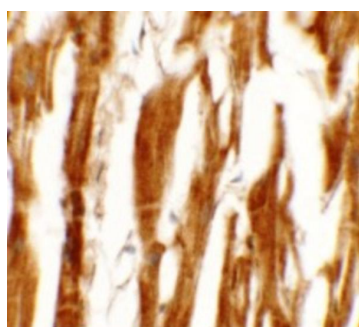
Immunogen	ESRRB antibody was raised against a 19 amino acid synthetic peptide near the carboxy terminus of human ESRRB. The immunogen is located within amino acids 360 - 410 of ESRRB.
Predicted Reactive Species	Mouse, Rat
Isotype	IgG
Form	Liquid
Concentration	1 mg/mL
Purification	ESRRB Antibody is affinity chromatography purified via peptide column.
Suggested Dilutions	ESRRB antibody can be used for detection of ESRRB by Western blot at 1 ug/mL. Antibody can also be used for immunohistochemistry starting at 5 ug/mL. For immunofluorescence start at 5 ug/mL. Antibody validated: Western Blot in human samples; Immunohistochemistry in human samples and

Immunofluorescence in human samples. All other applications and species not yet tested. Optimal dilutions for each application should be determined by the researcher.

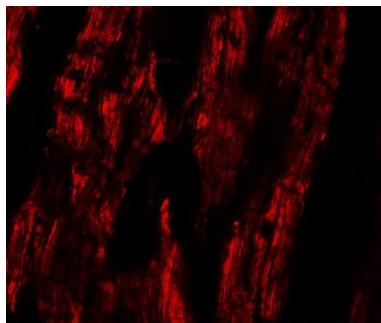
Anti-Steroid hormone receptor ERR2 ESRRB Antibody (A03473) Images



Western blot analysis of ESRRB in human heart tissue lysate with ESRRB antibody at 1 ug/mL in (A) the absence and (B) the presence of blocking peptide.



Immunohistochemistry of ESRR8 in human heart tissue with ESRR8 antibody at 5 ug/mL.



Immunofluorescence of ESRRB in human heart tissue with ESRRB antibody at 20 ug/mL.

Submit a product review to [Biocompare.com](https://www.biocompare.com)

Submit a review of this product to [Biocompare.com](https://www.biocompare.com) to receive a \$20 Amazon.com giftcard! Your reviews help your fellow scientists make the right decisions. Thank you for your contribution.



Anti-Steroid hormone receptor ERR2 ESRRB Antibody

For Research Use Only. Not for use in diagnostic procedures.