

Anti-RHOG Antibody

Catalog Number: A03485

About RHOG

The ras homolog family member G (RHOG), also known as rho-related GTP-binding protein, is a member of the Rho family of small GTPases, which cycle between inactive GDP-bound and active GTP-bound states and function as molecular switches in signal transduction cascades (1). RHOG controls a pathway that requires the microtubule network and activates Rac1 and Cdc42Hs independently of their growth factor signaling pathway (2). RHOG is also involved in the transcriptional regulation of interferon-gamma and nuclear factor of activated T cells (NFAT) and the regulation of the actin skeleton in lymphocytes (3).

Overview

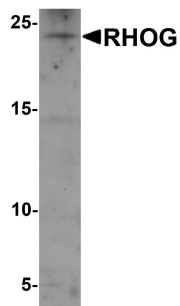
Product Name	Anti-RHOG Antibody
Reactive Species	Human, Mouse, Rat
Description	Boster Bio Anti-RHOG Antibody (Catalog # A03485). Tested in ELISA, WB, IHC-P applications. This antibody reacts with Human, Mouse, Rat.
Application	ELISA, IHC-P, WB
Clonality	Polyclonal
Formulation	RHOG antibody is supplied in PBS containing 0.02% sodium azide.
Storage Instructions	RHOG antibody can be stored at 4°C for three months and -20°C, stable for up to one year.
Host	Rabbit
Uniprot ID	P84095

Technical Details

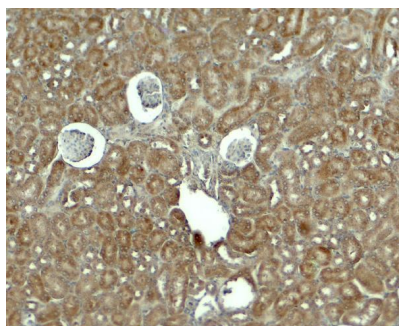
Immunogen	RHOG antibody was raised against a 15 amino acid peptide near the amino terminus of human RHOG. The immunogen is located within amino acids 40 - 90 of RHOG.
Predicted Reactive Species	Bovine, Chicken, Guinea Pig, Pig
Cross Reactivity	RHOG antibody is human, mouse and rat reactive.
Isotype	IgG
Form	Liquid
Concentration	1 mg/mL
Purification	RHOG antibody is affinity chromatography purified via peptide column.
Suggested Dilutions	RHOG antibody can be used for detection of RHOG by Western blot at 1 - 2 ug/ml. Antibody can

also be used for immunohistochemistry starting at 5 ug/mL.
Antibody validated: Western Blot in human samples and Immunohistochemistry in mouse samples.
All other applications and species not yet tested. Optimal dilutions for each application should be determined by the researcher.

Anti-RHOG Antibody (A03485) Images



Western blot analysis of RHOG in human kidney tissue lysate with RHOG antibody at 1 ug/ml.



Immunohistochemistry of RHOG in mouse kidney tissue with RHOG antibody at 5 ug/ml.

Submit a product review to [Biocompare.com](https://www.biocompare.com)

Submit a review of this product to [Biocompare.com](https://www.biocompare.com) to receive a \$20 Amazon.com giftcard! Your reviews help your fellow scientists make the right decisions. Thank you for your contribution.



Anti-RHOG Antibody

For Research Use Only. Not for use in diagnostic procedures.