

## Anti-C/EBP delta/epsilon CEBPD Antibody

Catalog Number: A03499

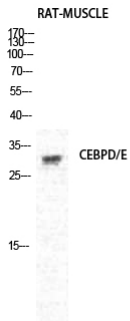
### Overview

|                      |  |
|----------------------|--|
| Product Name         | Anti-C/EBP delta/epsilon CEBPD Antibody  |
| Reactive Species     | Human, Mouse, Rat  |
| Description          | Boster Bio Anti-C/EBP delta/epsilon CEBPD Antibody catalog # A03499. Tested in WB, IHC, IF, ELISA applications. This antibody reacts with Human, Mouse, Rat.   |
| Application          | ELISA, IF, IHC, WB   |
| Clonality            | Polyclonal   |
| Formulation          | Liquid in PBS containing 50% glycerol, 0.5% stabilizing protein and 0.02% sodium azide.<br>*This antibody is supplied in a stabilized formulation.<br>Compatibility with conjugation reactions depends on the chemistry of the conjugation method used. For conjugation methods that are not compatible with the stabilizing components present in this formulation, a carrier-free antibody format is required. |
| Storage Instructions | Store at -20°C for one year. For short term storage and frequent use, store at 4°C for up to one month. Avoid repeated freeze-thaw cycles.   |
| Host                 | Rabbit   |
| Uniprot ID           | P49716   |

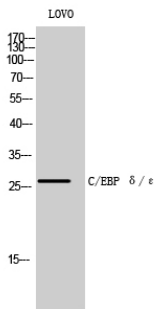
### Technical Details

|                     |   |
|---------------------|---|
| Immunogen           | The antiserum was produced against synthesized peptide derived from human CEBPD/E. AA range:171-220                   |
| Isotype             | IgG   |
| Form                | Liquid  |
| Concentration       | 1 mg/ml   |
| Purification        | The antibody was affinity-purified from rabbit antiserum by affinity-chromatography using epitope-specific immunogen. |
| Suggested Dilutions | WB 1:500-1:2000<br>IHC 1:100-1:300<br>IF 1:200-1:1000<br>ELISA 1:20000  |

## Anti-C/EBP delta/epsilon CEBPD Antibody (A03499) Images



Western blotting validation for Anti-C/EBP delta/epsilon CEBPD Antibody A03499 Western Blot (WB) analysis of Rat Muscle cells using C/EBP delta/epsilon polyclonal antibody. Electrophoresis was performed on a SDS-PAGE gel. To determine SDS-PAGE gel concentration



Western blotting validation for Anti-C/EBP delta/epsilon CEBPD Antibody A03499 Western Blot (WB) analysis of LOVO cells using C/EBP delta/epsilon polyclonal antibody. Electrophoresis was performed on a SDS-PAGE gel. To determine SDS-PAGE gel concentration

### Submit a product review to Biocompare.com

Submit a review of this product to Biocompare.com to receive a \$20 Amazon.com giftcard! Your reviews help your fellow scientists make the right decisions. Thank you for your contribution.



Anti-C/EBP delta/epsilon CEBPD Antibody

For Research Use Only. Not for use in diagnostic procedures.