

## Anti-CEBP Delta Antibody

Catalog Number: A03499-2

### About CEBPD

This antibody is suitable for Cancer, Immunology and Nuclear Signaling research. C/EBP proteins are DNA-binding proteins that are important transcriptional activators in the regulation of genes involved in immune and inflammatory responses and may play an important role in the regulation of the several genes associated with activation and/or differentiation of macrophages. Members of the C/EBP transcription factor family are related by a high degree of amino acid sequence identity to the basic leucine zipper DNA-binding domain and show distinct but overlapping patterns of tissue- and stage-restricted expression. Osada et al. identified the consensus binding site for the family as RTTGCGYAAY (R = A or G, and Y = C or T). Phosphorylation of C/EBPd may increase binding activity, whereas phosphorylation of the a and b family members may decrease binding affinity. C/EBPd is a nuclear protein that binds DNA as a dimer and can form stable heterodimers with all other C/EBP family members.

### Overview

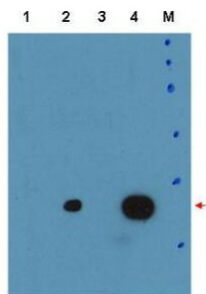
Product Name	Anti-CEBP Delta Antibody
Reactive Species	Mouse
Description	Boster Bio Anti-CEBP Delta Antibody (Catalog # A03499-2). Tested in ELISA, WB applications. This antibody reacts with Mouse.
Conjugate	HRP
Application	ELISA, IP, IHC, WB
Clonality	Polyclonal
Formulation	0.02 M Potassium Phosphate, 0.15 M Sodium Chloride, pH 7.2, 0.01% (w/v) Sodium Azide
Storage Instructions	Store vial at -20°C prior to opening. Aliquot contents and freeze at -20°C or below for extended storage. Avoid cycles of freezing and thawing. Centrifuge product if not completely clear after standing at room temperature. This product is stable for several weeks at 4°C as an undiluted liquid. Dilute only prior to immediate use. Expiration date is one (1) year from date of opening. (Ship on dry ice.)
Host	Rabbit
Uniprot ID	Q00322

### Technical Details

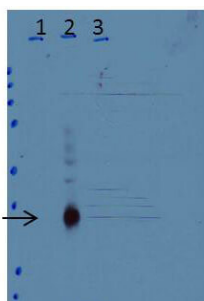
Immunogen	This affinity purified antibody was prepared from whole rabbit serum produced by repeated immunizations with a recombinant protein corresponding to the amino terminus of mouse C/EBP.
Predicted Reactive Species	Canine
Cross Reactivity	No cross reactivity with other proteins.

Isotype	IgG
Form	Liquid (sterile filtered)
Concentration	1.0 mg/mL by UV absorbance at 280 nm
Purification	This product was affinity purified from monospecific antiserum by immunoaffinity chromatography. This antibody recognizes endogenous mouse and recombinant human C/EBP delta protein. A BLAST analysis was used to suggest cross-reactivity with C/EBPd from human sources based on 77% homology with the immunizing sequence. No cross-reactivity is observed with mouse C/EBPa or C/EBPb. Reactivity with C/EBPd from other sources has not been determined.
Suggested Dilutions	<p>ELISA: 1:4,000 - 1:9,000            IHC: 1:2000            IP: 0.8 - 1.5 µg/ml            WB: 1:1,000 - 1:15,000</p> <p>This affinity purified antibody has been tested for use in ELISA, western blotting, and suitable in IHC. Specific conditions for reactivity should be optimized by the end user. Expect a band approximately 35 kDa in size corresponding to C/EBPd by western blotting in the appropriate cell lysate or extract. The predicted molecular weight of mouse C/EBPd is 28.8 kDa. This antibody is capable of detecting both over-expressed and endogenous C/EBPd.</p>

## Anti-CEBP Delta Antibody (A03499-2) Images



Western Blot of Anti-C/EBPd Antibody Lane 1: human C/EBPbeta Lane 2: Mouse C/EBPdelta Lane 3: untransfected Lane 4: human C/EBPdelta Load: 35 µg per lane Primary: Anti-C/EBPd Antibody used at a dilution of 1:15k overnight at 4°C Blocking: buffer TBST ECL was used for detection of overexpressed protein in human and mouse C/EBP delta. Predicted/Observed size: 28.8 kDa, ~35 kDa



Western Blot of Anti-C/EBPd Antibody. Lane 1: untreated wild-type (WT) cells. Lane 2: WT cells treated 3 h with LPS. Lane 3: C/EBPd-knock-out cells treated 3H with LPS. Load: 35 µg per lane. Primary: Anti-C/EBPd Antibody used at a dilution of 1:15k overnight at 4°C. Blocking: buffer TBST. ECL was used for detection of endogenous protein in whole cell extracts from mouse primary macrophage cells. Predicted/Observed size: 28.8 kDa, ~35 kDa.

### Submit a product review to [Biocompare.com](https://www.biocompare.com)

Submit a review of this product to [Biocompare.com](https://www.biocompare.com) to receive a \$20 Amazon.com giftcard! Your reviews help your fellow scientists make the right decisions. Thank you for your contribution.



Anti-CEBP Delta Antibody

For Research Use Only. Not for use in diagnostic procedures.