

Anti-SULT1A1 Antibody (C-term)

Catalog Number: A03500-1

About SULT1A1

Sulfotransferase that utilizes 3'-phospho-5'-adenylyl sulfate (PAPS) as sulfonate donor to catalyze the sulfate conjugation of catecholamines, phenolic drugs and neurotransmitters. Has also estrogen sulfotransferase activity. responsible for the sulfonation and activation of minoxidil. Is Mediates the metabolic activation of carcinogenic N- hydroxyarylamines to DNA binding products and could so participate as modulating factor of cancer risk.

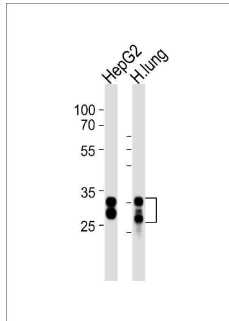
Overview

Product Name	Anti-SULT1A1 Antibody (C-term)
Reactive Species	Human
Description	Boster Bio Anti-SULT1A1 Antibody (C-term) (Catalog # A03500-1). Tested in WB, Flow Cytometry application(s). This antibody reacts with Human.
Application	Flow Cytometry, WB
Clonality	Polyclonal
Formulation	Purified polyclonal antibody supplied in PBS with 0.09% (W/V) sodium azide.
Storage Instructions	Maintain refrigerated at 2-8°C for up to 2 weeks. For long-term storage, store at -20°C in small aliquots to prevent freeze-thaw cycles.
Host	Rabbit
Uniprot ID	P50225

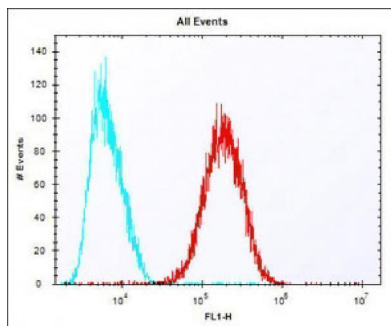
Technical Details

Immunogen	This SULT1A1 antibody is generated from a rabbit immunized with a KLH conjugated synthetic peptide between 246-279 amino acids of human SULT1A1.
Predicted Reactive Species	Bovine, Chicken, Drosophila, Mouse, Pig, Rat
Isotype	Rabbit IgG
Purification	This antibody is purified through a protein A column, followed by peptide affinity purification.
Suggested Dilutions	WB: 1:1000 FC: 1:25

Anti-SULT1A1 Antibody (C-term) (A03500-1) Images



Western blot analysis of lysates from HepG2 cell line and human lung tissue (from left to right), using SULT1A1 Antibody (C-term). A03500-1 was diluted at 1:1000 at each lane. A goat anti-rabbit IgG H&L (HRP) at 1:10000 dilution was used as the secondary antibody. Lysates at 20ug per lane.



Overlay histogram showing HepG2 cells stained with A03500-1 (red line). The cells were fixed with 2% paraformaldehyde (10 min) and then permeabilized with 90% methanol for 10 min. The cells were then incubated in 2% bovine serum albumin to block non-specific protein-protein interactions followed by the antibody (A03500-1, 1:25 dilution) for 60 min at 37°C. The secondary antibody used was Alexa Fluor® 488 goat anti-rabbit IgG (H+L) at 1/400 dilution for 40 min at 37°C. Isotype control antibody (blue line) was rabbit IgG1 (1ug/1x10⁶ cells) used under the same conditions. Acquisition of >10, 000 events was performed.

Submit a product review to [Biocompare.com](https://www.biocompare.com)

Submit a review of this product to [Biocompare.com](https://www.biocompare.com) to receive a \$20 Amazon.com giftcard! Your reviews help your fellow scientists make the right decisions. Thank you for your contribution.



Anti-SULT1A1 Antibody (C-term)

For Research Use Only. Not for use in diagnostic procedures.