

Anti-Acetylcholinesterase AChE Antibody

Catalog Number: A03519

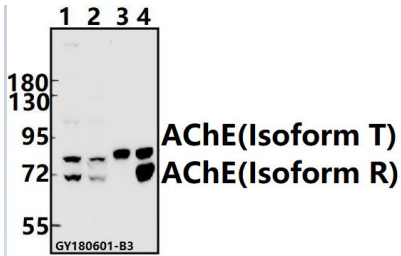
Overview

Product Name	Anti-Acetylcholinesterase AChE Antibody
Reactive Species	Human, Mouse, Rat
Description	Boster Bio Anti-Acetylcholinesterase AChE Antibody catalog # A03519. Tested in WB,IHC applications. This antibody reacts with Human,Mouse,Rat.
Application	IHC, WB
Clonality	Polyclonal
Formulation	Rabbit IgG, 1mg/ml in PBS with 0.02% sodium azide, 50% glycerol, pH7.2
Storage Instructions	Store at -20°C for one year. For short term storage and frequent use, store at 4°C for up to one month. Avoid repeated freeze-thaw cycles.
Host	Rabbit
Uniprot ID	P22303

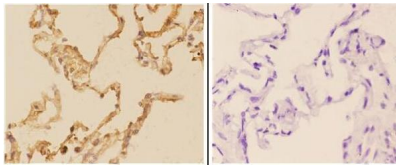
Technical Details

Immunogen	Synthetic peptide corresponding to residues in Human AChE.
Isotype	IgG
Form	Liquid
Concentration	1 mg/ml
Purification	The antibody was affinity-purified from rabbit antiserum by affinity-chromatography using epitope-specific immunogen and the purity is > 117% (by SDS-PAGE).
Suggested Dilutions	WB: 1:500-1:1000 IHC: 1:50-1:200

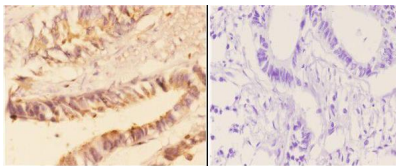
Anti-Acetylcholinesterase AChE Antibody (A03519) Images



Western blot (WB) analysis of AChE pAb at 1:500 dilution
Lane1:K562 whole cell lysate(40ug) Lane2:SGC7901 whole cell lysate(40ug) Lane3:The Blood tissue lysate of Mouse(40ug) Lane4:The Blood tissue lysate of Rat(40ug)



Immunohistochemistry (IHC) analyzes of AChE pAb bin paraffin-embedded human lung carcinoma tissue at 1:50,showing membrnae and nuclear staining.Negative control (the right)Using PBS instead of primary antibody, secondary antibody is Goat Anti-Rabbit IgG-biotin followed by avidin-peroxidase.



Immunohistochemistry (IHC) analyzes of AChE pAb bin paraffin-embedded human rectum carcinoma tissue at 1:50,showing membrnae and nuclear staining.Negative control (the right)Using PBS instead of primary antibody, secondary antibody is Goat Anti-Rabbit IgG-biotin followed by avidin-peroxidase.

Submit a product review to [Biocompare.com](https://www.biocompare.com)

Submit a review of this product to [Biocompare.com](https://www.biocompare.com) to receive a \$20 Amazon.com giftcard! Your reviews help your fellow scientists make the right decisions. Thank you for your contribution.



Anti-Acetylcholinesterase AChE Antibody

For Research Use Only. Not for use in diagnostic procedures.