

## Anti-ACHE Antibody (N-term)

Catalog Number: A03519-1

### About ACHE

Acetylcholinesterase hydrolyzes the neurotransmitter, acetylcholine at neuromuscular junctions and brain cholinergic synapses, and thus terminates signal transmission. The Protein is also found on the red blood cell membranes, where it constitutes the Yt blood group antigen. Acetylcholinesterase exists in multiple molecular forms which possess similar catalytic properties, but differ in their oligomeric assembly and mode of cell attachment to the cell surface. The major form of acetylcholinesterase found in brain, muscle and other tissues is the hydrophilic species, which forms disulfide-linked oligomers with collagenous, or lipid-containing structural subunits.

### Overview

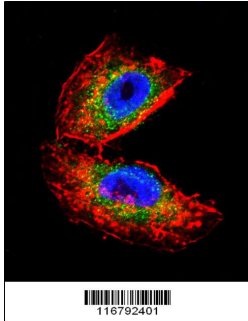
Product Name	Anti-ACHE Antibody (N-term)
Reactive Species	Human
Description	Boster Bio Anti-ACHE Antibody (N-term) (Catalog # A03519-1). Tested in WB, IF, Flow Cytometry, IHC-P application(s). This antibody reacts with Human.
Application	Flow Cytometry, IF, IHC-P, WB
Clonality	Polyclonal
Formulation	Purified polyclonal antibody supplied in PBS with 0.09% (W/V) sodium azide.
Storage Instructions	Maintain refrigerated at 2-8°C for up to 2 weeks. For long-term storage, store at -20°C in small aliquots to prevent freeze-thaw cycles.
Host	Rabbit
Uniprot ID	P22303

### Technical Details

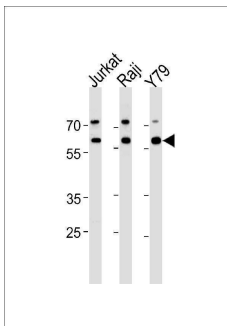
Immunogen	This ACHE antibody is generated from rabbits immunized with a KLH conjugated synthetic peptide between 147-175 amino acids from the N-terminal region of human ACHE.
Predicted Reactive Species	Guinea Pig
Isotype	Rabbit IgG
Purification	This antibody is prepared by Saturated Ammonium Sulfate (SAS) precipitation followed by dialysis against PBS.
Suggested Dilutions	IF: 1:10-1:50 WB: 1:1000 IHC-P: 1:10-1:50 FC: 1:10-1:50



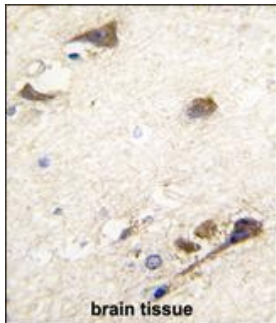
## Anti-ACHE Antibody (N-term) (A03519-1) Images



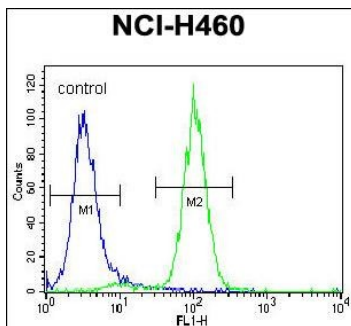
Confocal immunofluorescent analysis of ACHE Antibody (N-term) with NCI-H460 cell followed by Alexa Fluor 488-conjugated goat anti-rabbit IgG (green). Actin filaments have been labeled with Alexa Fluor 555 phalloidin (red). DAPI was used to stain the cell nuclear (blue).



ACHE Antibody (N-term) western blot analysis in Jurkat, Raji, Y79 cell line lysates (35ug/lane). This demonstrates the ACHE antibody detected the ACHE protein (arrow).



Formalin-fixed and paraffin-embedded human brain tissue reacted with ACHE antibody (N-term), which was peroxidase-conjugated to the secondary antibody, followed by DAB staining. This data demonstrates the use of this antibody for immunohistochemistry; clinical relevance has not been evaluated.



ACHE Antibody (N-term) flow cytometric analysis of NCI-H460 cells (right histogram) compared to a negative control cell (left histogram). FITC-conjugated goat-anti-rabbit secondary antibodies were used for the analysis.

**Submit a product review to Biocompare.com**

Submit a review of this product to Biocompare.com to receive a \$20 Amazon.com giftcard! Your reviews help your fellow scientists make the right decisions. Thank you for your contribution.



Anti-ACHE Antibody (N-term)

For Research Use Only. Not for use in diagnostic procedures.