

## Anti-BAD Antibody

Catalog Number: A03520

### About BAD

Members in the Bcl-2 family are critical regulators of apoptosis by either inhibiting or promoting cell death. Bcl-2 homology 3 (BH3) domain containing pro-apoptotic proteins, such as Bax, Bid, and Bik, form a growing subclass of the Bcl-2 family. Another such protein is the Bcl-2-antagonist of cell death (Bad). Bad regulates apoptosis by forming heterodimers with anti-apoptotic proteins Bcl-2 and Bcl-xL, thereby preventing them from binding with Bax. Bad activity is regulated by its phosphorylation; it is inactivated by kinases such as Akt and MAP kinase and thus promotes cell survival, whereas JNK-induced phosphorylation promotes the apoptotic role of Bad.

### Overview

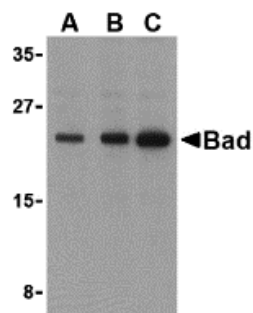
Product Name	Anti-BAD Antibody
Reactive Species	Human, Mouse, Rat
Description	Boster Bio Anti-BAD Antibody (Catalog # A03520). Tested in ELISA, WB, IHC-P, IF applications. This antibody reacts with Human, Mouse, Rat.
Application	ELISA, IF, IHC-P, WB
Clonality	Polyclonal
Formulation	BAD Antibody is supplied in PBS containing 0.02% sodium azide.
Storage Instructions	BAD antibody can be stored at 4°C for three months and -20°C, stable for up to one year. Avoid repeated freeze-thaw cycles. Antibodies should not be exposed to prolonged high temperatures.
Host	Rabbit
Uniprot ID	Q92934

### Technical Details

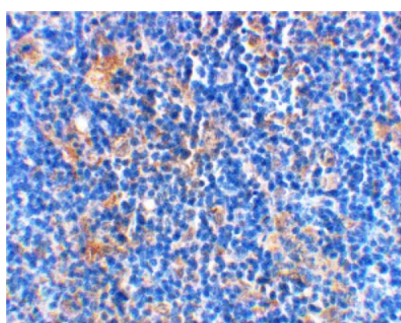
Immunogen	Bad antibody was raised against a peptide corresponding to 15 amino acids near the C-terminus of human Bad. The immunogen is located within amino acids 90 - 140 of BAD.
Predicted Reactive Species	Chicken, Mouse
Isotype	IgG
Form	Liquid
Concentration	1 mg/mL
Purification	BAD Antibody is Ion exchange chromatography purified.
Suggested Dilutions	Bad antibody can be used for detection of Bad by Western blot at 0.5 to 2 ug/mL. Antibody can also be used for immunohistochemistry starting at 2 ug/mL. For immunofluorescence start at 10 ug/mL.

Antibody validated: Western Blot in human samples; Immunohistochemistry in rat samples and Immunofluorescence in rat samples. All other applications and species not yet tested. Optimal dilutions for each application should be determined by the researcher.

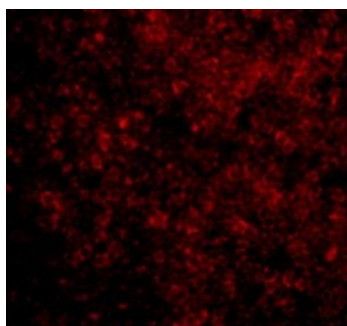
## Anti-BAD Antibody (A03520) Images



Western blot analysis of Bad in T24 cell lysates with Bad antibody at (A) 0.5, (B) 1, and (C) 2 ug/mL.



Immunohistochemical staining of rat thymus using Bad at 2 ug/mL.



Immunofluorescence of BAD in Rat Thymus cells with BAD antibody at 10 ug/mL.

## 2 Publications Citing This Product

1. PubMed ID: 33727850, Xie H,Wang H,Wu Q,Peng J,Huang H,Wang Y,Huang M,Jiang W,Yang Y,Zhang X,Zhang J,Zhu Q. Endothelin-1/Endothelin Receptor Type A-Angiopietins/Tie-2 Pathway in Regulating the Cross Talk Between Glomerular Endothelial Cells and Podocytes in Trichloroethylene-Induced Renal Immune Injury. *J Inflamm Res.* 2021 Mar 9;14:761-776.doi:10.2147/JIR.S301104.PMID:33727850;PMCID: PMC7955787.

2. PubMed ID: 33382670, Chen H,Sheng H,Zhao Y,Zhu G.Piperine Inhibits Cell Proliferation and Induces Apoptosis of Human Gastric Cancer Cells by Downregulating Phosphatidylinositol 3-Kinase (PI3K)/Akt Pathway.*Med Sci Monit.*2020 Dec 31;26:e928403.doi:10.12659/MSM.928403.PMID:33382

Visit [bosterbio.com/anti-bad-antibody-a03520-boster.html](https://www.bosterbio.com/anti-bad-antibody-a03520-boster.html) to see all 2 publications.

Submit a product review to [Biocompare.com](https://www.biocompare.com)

Submit a review of this product to Biocompare.com to receive a \$20 Amazon.com giftcard! Your reviews help your fellow scientists make the right decisions. Thank you for your contribution.



### Anti-BAD Antibody

For Research Use Only. Not for use in diagnostic procedures.