

Anti-Dishevelled/Dvl1 Antibody Picoband™

Catalog Number: A03533-1

About DVL1

Segment polarity protein dishevelled homolog DVL-1 is a protein that in humans is encoded by the DVL1 gene. DVL1, the human homolog of the Drosophila dishevelled gene (dsh) encodes a cytoplasmic phosphoprotein that regulates cell proliferation, acting as a transducer molecule for developmental processes, including segmentation and neuroblast specification. DVL1 is a candidate gene for neuroblastomatous transformation. The Schwartz-Jampel syndrome and Charcot-Marie-Tooth disease type 2A have been mapped to the same region as DVL1. The phenotypes of these diseases may be consistent with defects which might be expected from aberrant expression of a DVL gene during development.

Overview

Product Name	Anti-Dishevelled/Dvl1 Antibody Picoband™
Reactive Species	Human, Rat
Description	Boster Bio Anti-Dishevelled/Dvl1 Antibody Picoband™ catalog # A03533-1. Tested in IHC, WB applications. This antibody reacts with Human, Rat.
Application	IHC, WB
Clonality	Polyclonal
Formulation	Each vial contains 4mg Trehalose, 0.9mg NaCl, 0.2mg Na2HPO4, 0.05mg NaN3.
Storage Instructions	Store at -20°C for one year from date of receipt. After reconstitution, at 4°C for one month. It can also be aliquotted and stored frozen at -20°C for six months. Avoid repeated freeze-thaw cycles.
Host	Rabbit
Uniprot ID	O14640

Technical Details

Immunogen	A synthetic peptide corresponding to a sequence in the middle region of human DVL1, different from the related mouse and rat sequences by one amino acid.
Recommended Detection Systems	Boster recommends Enhanced Chemiluminescent Kit with anti-Rabbit IgG (EK1002) for Western blot, and HRP Conjugated anti-Rabbit IgG Super Vision Assay Kit (SV0002-1) for IHC(P).
Cross Reactivity	No cross-reactivity with other proteins
Isotype	Rabbit IgG
Form	Lyophilized
Concentration	Adding 0.2 ml of distilled water will yield a concentration of 500 ug/ml.
Purification	Immunogen affinity purified.

Suggested Dilutions

Dilute the sample so that the expected range of concentrations fall within the detection range of this kit.

If the expected range of concentration is unknown, a pilot test should be conducted to decide the optimal dilution ratio for your samples.

Some PubMed article(s) citing the expression level of this target are as follows:

Boster Bio's internal QC testing used:

Immunohistochemistry (Paraffin-embedded Section), 0.5-1ug/ml, Human, By Heat

Western blot, 0.1-0.5ug/ml, Rat, Human

Anti-Dishevelled/Dvl1 Antibody Picoband™ (A03533-1) Images

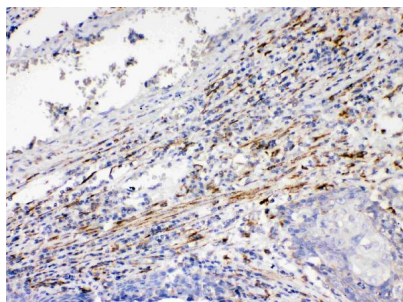


Figure 2. IHC analysis of DVL1 using anti-DVL1 antibody (A03533-1).

DVL1 was detected in paraffin-embedded section of human lung cancer tissues. Heat mediated antigen retrieval was performed in citrate buffer (pH6, epitope retrieval solution) for 20 mins. The tissue section was blocked with 10% goat serum. The tissue section was then incubated with 1ug/ml rabbit anti-DVL1 Antibody (A03533-1) overnight at 4°C. Biotinylated goat anti-rabbit IgG was used as secondary antibody and incubated for 30 minutes at 37°C. The tissue section was developed using Streptavidin-Biotin-Complex (SABC)(Catalog # SA1022) with DAB as the chromogen.

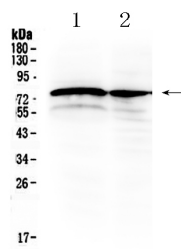


Figure 1. Western blot analysis of DVL1 using anti-DVL1 antibody (A03533-1).

Electrophoresis was performed on a 5-20% SDS-PAGE gel at 70V (Stacking gel) / 90V (Resolving gel) for 2-3 hours. The sample well of each lane was loaded with 50ug of sample under reducing conditions.

Lane 1: rat brain tissue lysates,

Lane 2: rat testis tissue lysates.

After Electrophoresis, proteins were transferred to a Nitrocellulose membrane at 150mA for 50-90 minutes. Blocked the membrane with 5% Non-fat Milk/ TBS for 1.5 hour at RT. The membrane was incubated with rabbit anti-DVL1 antigen affinity purified polyclonal antibody (Catalog # A03533-1) at 0.5 ug/mL overnight at 4°C, then washed with TBS-0.1%Tween 3 times with 5 minutes each and probed with a goat anti-rabbit IgG-HRP secondary antibody at a dilution of 1:10000 for 1.5 hour at RT. The signal is developed using an Enhanced Chemiluminescent detection (ECL) kit (Catalog # EK1002) with Tanon 5200 system. A specific band was detected for DVL1 at approximately 75KD. The expected band size for DVL1 is at 75KD.

Submit a product review to Biocompare.com

Submit a review of this product to Biocompare.com to receive a \$20 Amazon.com giftcard! Your reviews help your fellow scientists make the right decisions. Thank you for your contribution.



Anti-Dishevelled/Dvl1 Antibody™