

Anti-Transmembrane protein 106B TMEM106B Antibody

Catalog Number: A03541

About TMEM106B

Transmembrane protein 106B (TMEM106B) is a single-pass transmembrane protein that is thought to be a novel risk factor for frontotemporal lobar degeneration (FTLD), a group of clinically, pathologically and genetically heterogeneous disorders associated with atrophy in the frontal lobe and temporal lobe of the brain. The actual role of TMEM106B, and that of the closely related protein TMEM106A are still undetermined.

Overview

Product Name	Anti-Transmembrane protein 106B TMEM106B Antibody
Reactive Species	Human
Description	Boster Bio Anti-Transmembrane protein 106B TMEM106B Antibody (Catalog # A03541). Tested in ELISA, WB, IHC-P, IF applications. This antibody reacts with Human.
Application	ELISA, IF, IHC-P, WB
Clonality	Polyclonal
Formulation	TMEM106B Antibody is supplied in PBS containing 0.02% sodium azide.
Storage Instructions	TMEM106B antibody can be stored at 4°C for three months and -20°C, stable for up to one year. Avoid repeated freeze-thaw cycles. Antibodies should not be exposed to prolonged high temperatures.
Host	Rabbit
Uniprot ID	Q9NUM4

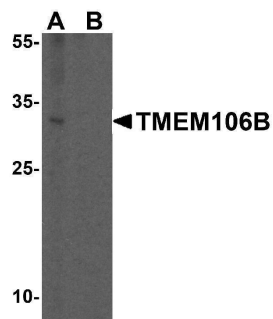
Technical Details

Immunogen	TMEM106B antibody was raised against a 15 amino acid synthetic peptide near the amino terminus of human TMEM106B. The immunogen is located within the first 50 amino acids of TMEM106B.
Predicted Reactive Species	Bovine, Mouse, Rat
Cross Reactivity	This TMEM106B antibody is predicted to have no cross-reactivity to TMEM106A.
Isotype	IgG
Form	Liquid
Concentration	1 mg/mL
Purification	TMEM106B Antibody is affinity chromatography purified via peptide column.
Suggested Dilutions	TMEM106B antibody can be used for detection of TMEM106B by Western blot at 1 ug/mL.

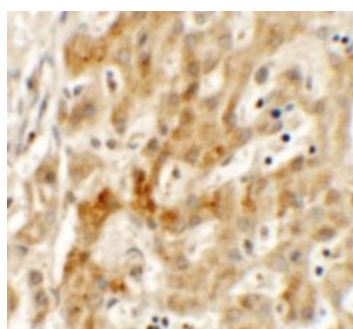
Antibody can also be used for immunohistochemistry starting at 2.5 ug/mL. For immunofluorescence start at 2.5 ug/mL.

Antibody validated: Western Blot in human samples; Immunohistochemistry in human samples and Immunofluorescence in human samples. All other applications and species not yet tested. Optimal dilutions for each application should be determined by the researcher.

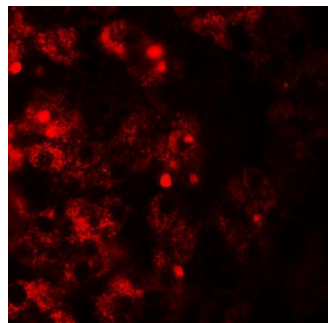
Anti-Transmembrane protein 106B TMEM106B Antibody (A03541) Images



Western blot analysis of TMEM106B in human brain tissue lysate with TMEM106B antibody at 1 ug/mL in (A) the absence and (B) the presence of blocking peptide.



Immunohistochemistry of TMEM106B in human liver tissue with TMEM106B antibody at 2.5 ug/mL.



Immunofluorescence of TMEM106B in human liver tissue with TMEM106A antibody at 20 ug/mL.

Submit a product review to [Biocompare.com](https://www.biocompare.com)

Submit a review of this product to [Biocompare.com](https://www.biocompare.com) to receive a \$20 Amazon.com giftcard! Your reviews help your fellow scientists make the right decisions. Thank you for your contribution.



Anti-Transmembrane protein 106B TMEM106B Antibody

For Research Use Only. Not for use in diagnostic procedures.