

Anti-SOST Antibody (N-term)

Catalog Number: A03551-1

About SOST

Sclerostin is a secreted glycoprotein with a C-terminal cysteine knot-like (CTCK) domain and sequence similarity to the DAN (differential screening-selected gene aberrative in neuroblastoma) family of bone morphogenetic protein (BMP) antagonists. Loss-of-function mutations in this gene are associated with an autosomal-recessive disorder, sclerosteosis, which causes progressive bone overgrowth. A deletion downstream of this gene, which causes reduced sclerostin expression, is associated with a milder form of the disorder called van Buchem disease.

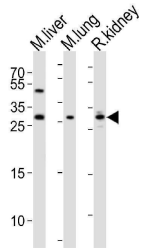
Overview

Product Name	Anti-SOST Antibody (N-term)
Reactive Species	Human, Mouse, Rat
Description	Boster Bio Anti-SOST Antibody (N-term) (Catalog # A03551-1). Tested in IHC-P-Leica, WB application(s). This antibody reacts with Human, Mouse, Rat.
Application	WB, IHC-P-Leica
Clonality	Polyclonal
Formulation	Purified polyclonal antibody supplied in PBS with 0.09% (W/V) sodium azide.
Storage Instructions	Maintain refrigerated at 2-8°C for up to 2 weeks. For long-term storage, store at -20°C in small aliquots to prevent freeze-thaw cycles.
Host	Rabbit
Uniprot ID	Q9BQB4

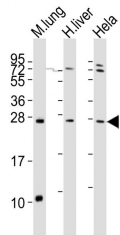
Technical Details

Immunogen	This SOST antibody is generated from rabbits immunized with a KLH conjugated synthetic peptide between 12-42 amino acids from the N-terminal region of human SOST.
Predicted Reactive Species	Bovine
Isotype	Rabbit IgG
Purification	This antibody is purified through a protein A column, followed by peptide affinity purification.
Suggested Dilutions	WB: 1:2000 IHC-P-Leica: 1:500

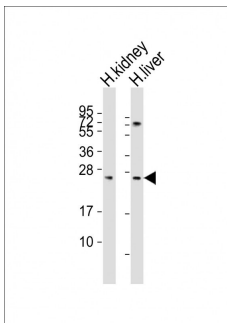
Anti-SOST Antibody (N-term) (A03551-1) Images



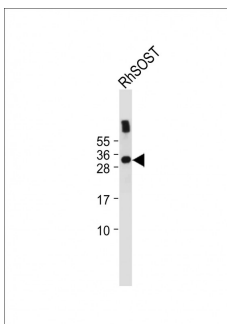
Western blot analysis of lysates from mouse liver, mouse lung, rat kidney tissue lysate (from left to right), using SOST Antibody (N-term). A03551-1 was diluted at 1:1000 at each lane. A goat anti-rabbit IgG H&L (HRP) at 1:10000 dilution was used as the secondary antibody. Lysates at 20ug per lane.



All lanes : Anti-SOST Antibody (N-term) at 1:2000 dilution
Lane 1: mouse lung lysates
Lane 2: human liver lysates
Lane 3: HeLa whole cell lysates
Lysates/proteins at 20 µg per lane. Secondary Goat Anti-Rabbit IgG, (H+L), Peroxidase conjugated at 1/10000 dilution
Predicted band size : 24 kDa
Blocking/Dilution buffer: 5% NFDM/TBST.

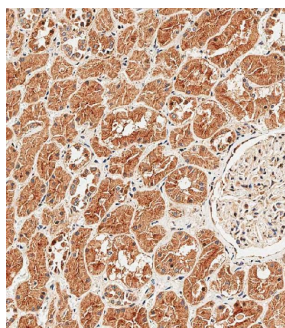


All lanes : Anti-SOST Antibody (N-term) at 1:1000 dilution
Lane 1: human kidney lysates
Lane 2: human liver lysates
Lysates/proteins at 20 µg per lane. Secondary Goat Anti-Rabbit IgG, (H+L), Peroxidase conjugated at 1/10000 dilution
Predicted band size : 24 kDa
Blocking/Dilution buffer: 5% NFDM/TBST.



Anti-SOST Antibody (N-term) at 1:2000 dilution + Recombinant human SOST protein lysate
Lysates/proteins at 20 ng per lane. Secondary Goat Anti-Rabbit IgG, (H+L), Peroxidase conjugated at 1/10000 dilution. Predicted band size : 24 kDa
Blocking/Dilution buffer: 5% NFDM/TBST.

Immunohistochemical analysis of paraffin-embedded Human kidney tissue using A03551-1 performed on the Leica® BOND RXm. Tissue was fixed with formaldehyde at room temperature, antigen retrieval was by heat mediation with a EDTA buffer (pH9. 0). Samples were incubated with primary antibody (1:500) for 1 hours at room temperature. A undiluted biotinylated CRF Anti-Polyvalent HRP Polymer



antibody was used as the secondary antibody.

Submit a product review to [Biocompare.com](https://www.biocompare.com)

Submit a review of this product to [Biocompare.com](https://www.biocompare.com) to receive a \$20 Amazon.com giftcard! Your reviews help your fellow scientists make the right decisions. Thank you for your contribution.



Anti-SOST Antibody (N-term)

For Research Use Only. Not for use in diagnostic procedures.