

Anti-Dvl-3 Antibody

Catalog Number: A03577-1

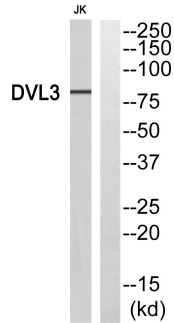
Overview

Product Name	Anti-Dvl-3 Antibody
Reactive Species	Human, Mouse
Description	Boster Bio Anti-Dvl-3 Antibody catalog # A03577-1. Tested in ELISA, IHC, WB applications. This antibody reacts with Human, Mouse.
Application	ELISA, IF, IHC, WB
Clonality	Polyclonal
Formulation	Liquid in PBS containing 50% glycerol, 0.5% stabilizing protein and 0.02% sodium azide. *This antibody is supplied in a stabilized formulation. Compatibility with conjugation reactions depends on the chemistry of the conjugation method used. For conjugation methods that are not compatible with the stabilizing components present in this formulation, a carrier-free antibody format is required.
Storage Instructions	Store at -20°C for one year. For short term storage and frequent use, store at 4°C for up to one month. Avoid repeated freeze-thaw cycles.
Host	Rabbit
Uniprot ID	Q92997

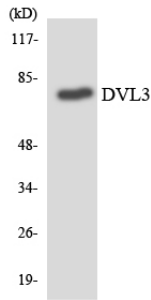
Technical Details

Immunogen	The antiserum was produced against synthesized peptide derived from human DVL3. AA range:326-375
Isotype	IgG
Form	Liquid
Concentration	1 mg/ml
Purification	The antibody was affinity-purified from rabbit antiserum by affinity-chromatography using epitope-specific immunogen.
Suggested Dilutions	WB 1:500-1:2000 IHC 1:100-1:300 ELISA 1:20000 IF 1:50-200

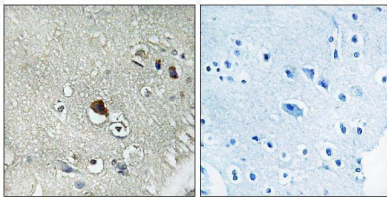
Anti-Dvl-3 Antibody (A03577-1) Images



Western blot analysis of DVL3 Antibody. The lane on the right is blocked with the DVL3 peptide.



Western blot analysis of the lysates from Jurkat cells using DVL3 antibody.



Immunohistochemistry analysis of paraffin-embedded human brain tissue, using DVL3 Antibody. The picture on the right is blocked with the synthesized peptide.

Submit a product review to [Biocompare.com](https://www.biocompare.com)

Submit a review of this product to [Biocompare.com](https://www.biocompare.com) to receive a \$20 Amazon.com giftcard! Your reviews help your fellow scientists make the right decisions. Thank you for your contribution.



Anti-Dvl-3 Antibody

For Research Use Only. Not for use in diagnostic procedures.