

Anti-CPEB1 Antibody

Catalog Number: A03578

About CPEB1

CPEB1 is an RNA binding protein that contains an RNA-recognition motif and a zinc finger-containing region found in a wide range of vertebrates and invertebrates. CPEB1 forms the nucleus of a complex of factors that regulate poly(A) elongation and promotes polyadenylation-induced translation. CPEB1 mediates many diverse biological processes such as germ cell development, cell division and senescence, and synaptic plasticity. Recently, it was discovered that CPEB1 is involved in beta-catenin mRNA translation and cell migration in astrocytes as well as regulating hypoxia-inducible factor (HIF)-1 expression, demonstrating the wide range of processes in which CPEB1 plays a role. At least four isoforms of CPEB1 are known to exist.

Overview

Product Name	Anti-CPEB1 Antibody
Reactive Species	Human, Mouse, Rat
Description	Boster Bio Anti-CPEB1 Antibody (Catalog # A03578). Tested in ELISA, WB applications. This antibody reacts with Human, Mouse, Rat.
Application	ELISA, WB
Clonality	Polyclonal
Formulation	CPEB1 Antibody is supplied in PBS containing 0.02% sodium azide.
Storage Instructions	CPEB1 antibody can be stored at 4°C for three months and -20°C, stable for up to one year. Avoid repeated freeze-thaw cycles. Antibodies should not be exposed to prolonged high temperatures.
Host	Rabbit
Uniprot ID	Q9BZB8

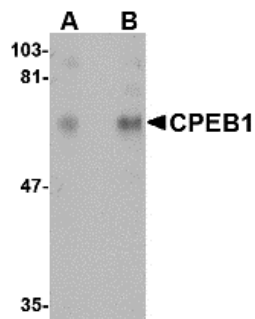
Technical Details

Immunogen	CPEB1 antibody was raised against a 14 amino acid synthetic peptide from near the amino terminus of human CPEB1. The immunogen is located within amino acids 50 - 100 of CPEB1.
Predicted Reactive Species	Bovine, Mouse, Rat
Isotype	IgG
Form	Liquid
Concentration	1 mg/mL
Purification	CPEB1 Antibody is affinity chromatography purified via peptide column.

Suggested Dilutions

CPEB1 antibody can be used for detection of CPEB1 by Western blot at 1 - 2 ug/mL.
Antibody validated: Western Blot in rat samples. All other applications and species not yet tested.
Optimal dilutions for each application should be determined by the researcher.

Anti-CPEB1 Antibody (A03578) Images



Western blot analysis of CPEB1 in rat brain tissue lysate with CPEB1 antibody at (A) 1 and (B) 2 ug/mL.

Submit a product review to Biocompare.com

Submit a review of this product to Biocompare.com to receive a \$20 Amazon.com giftcard! Your reviews help your fellow scientists make the right decisions. Thank you for your contribution.



Anti-CPEB1 Antibody

For Research Use Only. Not for use in diagnostic procedures.