

## Anti-GRF-1 (phospho-Y1105) ARHGAP35 Antibody

Catalog Number: A03592Y1105

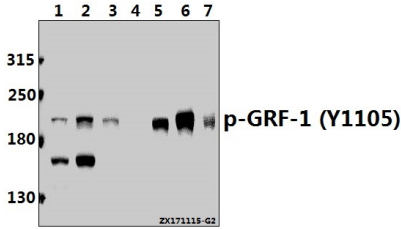
### Overview

Product Name	Anti-GRF-1 (phospho-Y1105) ARHGAP35 Antibody
Reactive Species	Human, Mouse, Rat
Description	Boster Bio Anti-GRF-1 (phospho-Y1105) ARHGAP35 Antibody catalog # A03592Y1105. Tested in WB,IHC applications. This antibody reacts with Human,Mouse,Rat.
Application	IHC, WB
Clonality	Polyclonal
Formulation	Rabbit IgG, 1mg/ml in PBS with 0.02% sodium azide, 50% glycerol, pH7.2
Storage Instructions	Store at -20°C for one year. For short term storage and frequent use, store at 4°C for up to one month. Avoid repeated freeze-thaw cycles.
Host	Rabbit
Uniprot ID	Q9NRY4

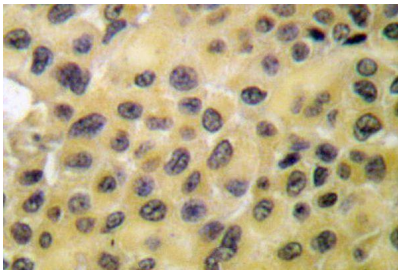
### Technical Details

Immunogen	Synthetic phosphopeptide derived from human GRF-1 around the phosphorylation site of Tyrosine 1105.
Isotype	IgG
Form	Liquid
Concentration	1 mg/ml
Purification	The antibody was affinity-purified from rabbit antiserum by affinity-chromatography using epitope-specific immunogen and the purity is > 95% (by SDS-PAGE).
Suggested Dilutions	WB: 1:500-1:1000 IHC: 1:50-1:200

## Anti-GRF-1 (phospho-Y1105) ARHGAP35 Antibody (A03592Y1105) Images



Western blot (WB) analysis of p-GRF-1 (Y1105) pAb at 1:500 dilution Lane1:The Heart tissue lysate of Rat(40ug) Lane2:K562 whole cell lysate(40ug) Lane3:Jurkat whole cell lysate(40ug) Lane4:The Blood tissue lysate of Mouse(40ug) Lane5:H1792 whole cell lysate(40ug) Lane6:HEK293T whole cell lysate(40ug) Lane7:SP2/0 whole cell lysate(40ug)



Immunohistochemistry (IHC) analyzes of p-GRF-1 (Y1105) pAb in paraffin-embedded human brain tissue.

**Submit a product review to Biocompare.com**

Submit a review of this product to Biocompare.com to receive a \$20 Amazon.com giftcard! Your reviews help your fellow scientists make the right decisions. Thank you for your contribution.



Anti-GRF-1 (phospho-Y1105) ARHGAP35 Antibody

For Research Use Only. Not for use in diagnostic procedures.