

Anti-CALHM1 Antibody

Catalog Number: A03599

About CALHM1

The laminar organization of multiple neuronal types in the cerebral cortex is required for normal cognitive function. In mice, the disabled-1 gene plays a central role in brain development, directing the migration of cortical neurons past previously formed neurons to reach their proper layer. This gene is similar to disabled-1, and the protein encoded by this gene is thought to be a signal transducer that interacts with protein kinase pathways to regulate neuronal positioning in the developing brain. Alternatively spliced transcript variants of this gene have been reported, but their full length nature has not been determined.

Kelian Chen, et.al. (2003) J. Cell Sci ; 117: 4527 - 4536.

Vera Strasser, et.al. (2004) Mol. Cell. Biol ; 24: 1378 - 1386.

Izhar Ben-Shlomo, et.al. (2003) Sci. STKE ; 2003: 9.

H. M. Kim, et.al. (2002) PNAS ; 99: 4020.

Overview

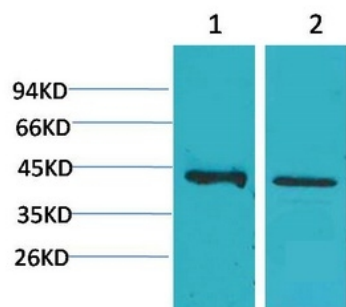
Product Name	Anti-CALHM1 Antibody
Reactive Species	Human, Rat
Description	Boster Bio Anti-CALHM1 Antibody catalog # A03599. Tested in IHC, WB applications. This antibody reacts with Human, Rat.
Application	IHC, WB
Clonality	Polyclonal 1H1D2
Formulation	Liquid in PBS containing 50% glycerol, 0.5% BSA and 0.02% sodium azide.
Storage Instructions	Store at -20°C for one year. For short term storage and frequent use, store at 4°C for up to one month. Avoid repeated freeze-thaw cycles.
Host	Rabbit
Uniprot ID	Q8IU99

Technical Details

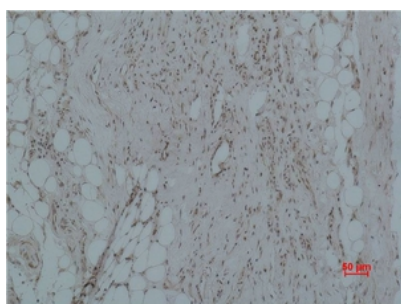
Immunogen	Synthetic Peptide
Predicted Reactive Species	Bovine, Canine, Guinea Pig, Rabbit
Cross Reactivity	No cross reactivity with other proteins.
Isotype	IgG

Form	Liquid
Concentration	This antibody's concentration is >0.5mg/ml.
Purification	Immunogen affinity purified
Suggested Dilutions	<p>Dilute the sample so that the expected range of concentrations fall within the detection range of this kit.</p> <p>If the expected range of concentration is unknown, a pilot test should be conducted to decide the optimal dilution ratio for your samples.</p> <p>Some PubMed article(s) citing the expression level of this target are as follows:</p> <p>Boster Bio's internal QC testing used:</p> <p>WB, 1:500-1000</p> <p>IHC, 1:200-500</p>

Anti-CALHM1 Antibody (A03599) Images



Western Blot (WB) analysis of 1) Human Brain Tissue, 2) Rat Brain Tissue using CALHM1 Polyclonal antibody.



Immunohistochemistry (IHC) analysis of paraffin-embedded Human Hepatocarcinoma using CALHM1 Polyclonal antibody.

Submit a product review to Biocompare.com

Submit a review of this product to Biocompare.com to receive a \$20 Amazon.com giftcard! Your reviews help your fellow scientists make the right decisions. Thank you for your contribution.



Anti-CALHM1 Antibody