

Anti-CALHM1 Antibody

Catalog Number: A03599-1

About CALHM1

Alzheimer's disease (AD) is a progressive neurodegenerative disorder characterized by a massive loss of neurons in several brain regions and by the presence of senile plaques comprised of aggregated amyloid-beta (A β) peptides produced by the endoproteolysis of the amyloid precursor protein (APP). The calcium homeostasis modulator 1 (CALHM1) is a recently identified multipass transmembrane glycoprotein that controls cytosolic Ca $^{2+}$ concentration and A β levels. While some studies suggest CALHM1 is significantly associated with risk of AD, other reports suggest there is no link. CALHM1 has been suggested to modulate the Ca $^{2+}$ -dependent proteolytic process of APP through controlling the level of cytosolic Ca $^{2+}$.

Overview

Product Name	Anti-CALHM1 Antibody
Reactive Species	Human, Mouse, Rat
Description	Boster Bio Anti-CALHM1 Antibody (Catalog # A03599-1). Tested in ELISA, WB, IHC-P, IF applications. This antibody reacts with Human, Mouse, Rat.
Application	ELISA, IF, IHC-P, WB
Clonality	Polyclonal
Formulation	CALHM1 Antibody is supplied in PBS containing 0.02% sodium azide.
Storage Instructions	CALHM1 antibody can be stored at 4°C for three months and -20°C, stable for up to one year. Avoid repeated freeze-thaw cycles. Antibodies should not be exposed to prolonged high temperatures.
Host	Rabbit
Uniprot ID	Q8IU99

Technical Details

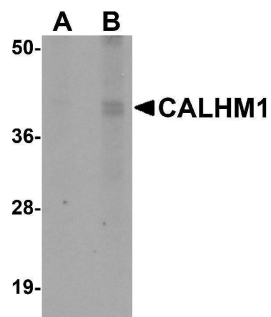
Immunogen	CALHM1 antibody was raised against a 17 amino acid synthetic peptide near the amino terminus of human CALHM1. The immunogen is located within amino acids 60 - 110 of CALHM1.
Predicted Reactive Species	Bovine, Mouse, Rat
Isotype	IgG
Form	Liquid
Concentration	1 mg/mL
Purification	CALHM1 Antibody is affinity chromatography purified via peptide column.

Suggested Dilutions

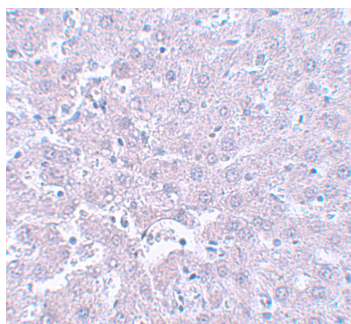
CALHM1 antibody can be used for detection of CALHM1 by Western blot at 1 - 2 ug/mL. Antibody can also be used for immunohistochemistry starting at 5 ug/mL. For immunofluorescence start at 20 ug/mL.

Antibody validated: Western Blot in rat samples; Immunohistochemistry in rat samples and Immunofluorescence in rat samples. All other applications and species not yet tested. Optimal dilutions for each application should be determined by the researcher.

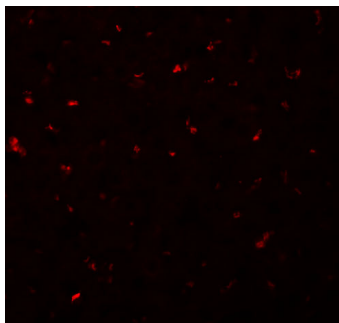
Anti-CALHM1 Antibody (A03599-1) Images



Western blot analysis of CALHM1 in rat liver tissue lysate with CALHM1 antibody at (A) 1 and (B) 2 ug/mL.



Immunohistochemistry of CALHM1 in rat liver tissue with CALHM1 antibody at 5 ug/mL.



Immunofluorescence of CALHM1 in Rat Liver cells with CALHM1 antibody at 20 ug/mL.

Submit a product review to [Biocompare.com](https://www.biocompare.com)

Submit a review of this product to [Biocompare.com](https://www.biocompare.com) to receive a \$20 Amazon.com giftcard! Your reviews help your fellow scientists make the right decisions. Thank you for your contribution.



Anti-CALHM1 Antibody

For Research Use Only. Not for use in diagnostic procedures.