

## Anti-IL-37 Antibody

Catalog Number: A03607-1

### About IL37

Interleukin 37 (IL-37) is a member of the interleukin 1 cytokine family (reviewed in 1). It can bind to, and may be a ligand for interleukin 18 receptor (IL18R1/IL-1Rrp). IL-37 also binds to interleukin 18 binding protein (IL18BP), an inhibitory binding protein of interleukin 18 (IL18), and subsequently forms a complex with IL18 receptor beta subunit, and through which it inhibits the activity of IL18 (1). IL-37 can also interact with Smad3 and expression of IL-37 in macrophages or epithelial cells resulted in near complete suppression of pro-inflammatory cytokines, suggesting that IL-37 may act as a natural suppressor of the innate inflammatory and immune responses (2,3).

### Overview

Product Name	Anti-IL-37 Antibody
Reactive Species	Human
Description	Boster Bio Anti-IL-37 Antibody (Catalog # A03607-1). Tested in ELISA, WB, IHC-P, IF applications. This antibody reacts with Human.
Application	ELISA, IF, IHC-P, WB
Clonality	Polyclonal
Formulation	IL-37 Antibody is supplied in PBS containing 0.02% sodium azide.
Storage Instructions	IL-37 antibody can be stored at 4°C for three months and -20°C, stable for up to one year.
Host	Rabbit
Uniprot ID	Q9NZH6

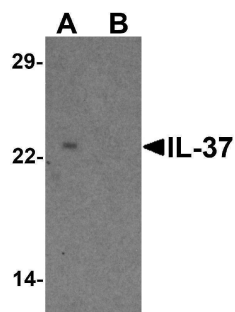
### Technical Details

Immunogen	IL-37 antibody was raised against a 17 amino acid peptide near the amino terminus of human IL-37. The immunogen is located within amino acids 30 - 80 of IL-37.
Predicted Reactive Species	Bovine, Mouse, Rat
Cross Reactivity	IL-37 antibody is human specific. Multiple isoforms of IL-37 are known to exist; this antibody will only detect the largest isoform. IL-37 antibody is predicted to not cross-react with IL-36.
Isotype	IgG
Form	Liquid
Concentration	1 mg/mL
Purification	IL-37 Antibody is affinity chromatography purified via peptide column.

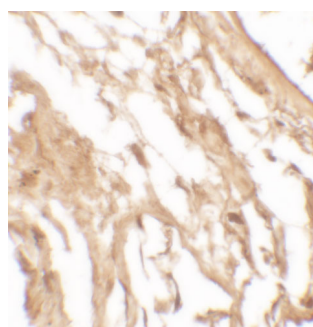
Suggested Dilutions

IL-37 antibody can be used for detection of IL-37 by Western blot at 1 - 2 ug/ml.  
Antibody validated: Western Blot in human samples; Immunohistochemistry in human samples and Immunofluorescence in human samples. All other applications and species not yet tested. Optimal dilutions for each application should be determined by the researcher.

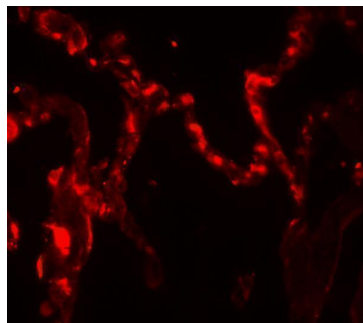
## Anti-IL-37 Antibody (A03607-1) Images



Western blot analysis of IL-37 in human lung tissue lysate with IL-37 antibody at 1 ug/ml in (A) the presence and (B) the absence of blocking peptide.



Immunohistochemistry of IL-12A in human kidney tissue with IL-12A antibody at 5 ug/mL.



Immunofluorescence of IL-12A in human kidney tissue with IL-12A antibody at 20 ug/mL.

### Submit a product review to [Biocompare.com](https://www.biocompare.com)

Submit a review of this product to [Biocompare.com](https://www.biocompare.com) to receive a \$20 Amazon.com giftcard! Your reviews help your fellow scientists make the right decisions. Thank you for your contribution.



### Anti-IL-37 Antibody

For Research Use Only. Not for use in diagnostic procedures.