

Anti-Spred1 Antibody

Catalog Number: A03613

About SPRED1

The Ras-MAP kinase pathway is essential for the differentiation of neuronal cells and myocytes; it is inhibited by Spred1, a member of the Sprouty family of proteins. Spred1 acts by suppressing the phosphorylation and activation of Raf. The Spred proteins have also been implicated in the negative feedback regulation of FGF signaling in embryogenesis and angiogenesis. Further studies have shown that expression levels of Spred1 and Spred2 proteins are inversely correlated with the incidence of tumor invasion and metastasis in human hepatocellular carcinoma (HCC), suggesting that these proteins could be useful as prognostic factors and therapeutic targets in HCC. Defects in this gene are a cause of neurofibromatosis type 1-like syndrome (NFLS). This Spred1 antibody is predicted to have no cross-reactivity to Spred2 or Spred3.

Overview

Product Name	Anti-Spred1 Antibody
Reactive Species	Human, Mouse, Rat
Description	Boster Bio Anti-Spred1 Antibody (Catalog # A03613). Tested in ELISA, WB, IHC-P applications. This antibody reacts with Human, Mouse, Rat.
Application	ELISA, IHC-P, WB
Clonality	Polyclonal
Formulation	Spred1 Antibody is supplied in PBS containing 0.02% sodium azide.
Storage Instructions	Spred1 antibody can be stored at 4°C for three months and -20°C, stable for up to one year. Avoid repeated freeze-thaw cycles. Antibodies should not be exposed to prolonged high temperatures.
Host	Rabbit
Uniprot ID	Q7Z699

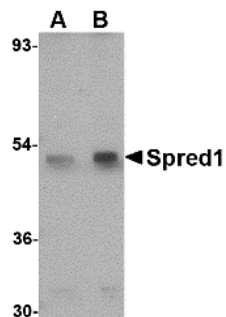
Technical Details

Immunogen	Spred1 antibody was raised against a 20 amino acid synthetic peptide near the center of the human Spred1. The immunogen is located within amino acids 120 - 170 of Spred1.
Predicted Reactive Species	Bovine, Mouse, Rat
Isotype	IgG
Form	Liquid
Concentration	1 mg/mL
Purification	Spred1 Antibody is affinity chromatography purified via peptide column.

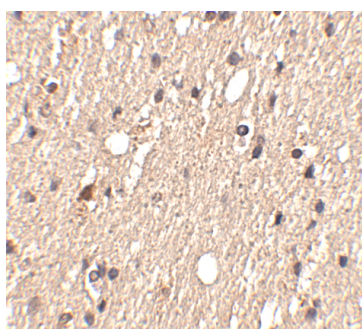
Suggested Dilutions

Spred1 antibody can be used for detection of Spred1 by Western blot at 1 - 2 ug/mL. Antibody can also be used for immunohistochemistry starting at 2.5 ug/mL.
Antibody validated: Western Blot in mouse samples and Immunohistochemistry in human samples.
All other applications and species not yet tested. Optimal dilutions for each application should be determined by the researcher.

Anti-Spred1 Antibody (A03613) Images



Western blot analysis of Spred1 in mouse brain tissue lysate with Spred1 antibody at (A) 1 and (B) 2 ug/mL.



Immunohistochemistry of Spred1 in human brain tissue with Spred1 antibody at 2.5 ug/mL.

Submit a product review to [Biocompare.com](https://www.biocompare.com)

Submit a review of this product to [Biocompare.com](https://www.biocompare.com) to receive a \$20 Amazon.com giftcard! Your reviews help your fellow scientists make the right decisions. Thank you for your contribution.



Anti-Spred1 Antibody

For Research Use Only. Not for use in diagnostic procedures.