

Anti-IRGM Antibody

Catalog Number: A03614

About IRGM

Autophagy, the process of bulk degradation of cellular proteins through an autophagosomic-lysosomal pathway is important for normal growth control and may be defective in tumor cells. It is involved in the preservation of cellular nutrients under starvation conditions as well as the normal turnover of cytosolic components. Two of the strongest hits implicate genes IRGM and ATG16L1, which encode proteins thought to be critical to the autophagy pathway and being significantly associated with Crohn's disease. IRGM induces autophagy and generates large autolysosomal organelles as a mechanism for the elimination of intracellular Mycobacterium tuberculosis. In mouse, IRGM belongs to a family of gamma-interferon-induced GTP-binding proteins of approximately 48 kDa that also includes IRGM2 and IRGM3; this antibody may also recognize these proteins.

Overview

Product Name	Anti-IRGM Antibody
Reactive Species	Human, Mouse, Rat
Description	Boster Bio Anti-IRGM Antibody (Catalog # A03614). Tested in ELISA, WB, IHC-P, IF applications. This antibody reacts with Human, Mouse, Rat.
Application	ELISA, IF, IHC-P, WB
Clonality	Polyclonal
Formulation	IRGM Antibody is supplied in PBS containing 0.02% sodium azide.
Storage Instructions	IRGM antibody can be stored at 4°C for three months and -20°C, stable for up to one year. Avoid repeated freeze-thaw cycles. Antibodies should not be exposed to prolonged high temperatures.
Host	Rabbit
Uniprot ID	A1A4Y4

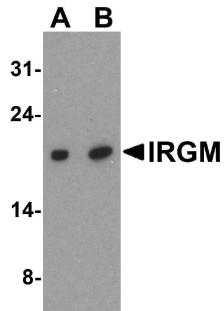
Technical Details

Immunogen	IRGM antibody was raised against a 17 amino acid synthetic peptide near the amino terminus of the human IRGM. The immunogen is located within amino acids 30 - 80 of IRGM.
Predicted Reactive Species	Bovine, Mouse, Rat
Isotype	IgG
Form	Liquid
Concentration	1 mg/mL
Purification	IRGM Antibody is affinity chromatography purified via peptide column.

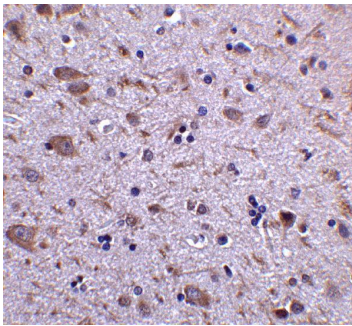
Suggested Dilutions

IRGM antibody can be used for detection of IRGM by Western blot at 1 - 2 ug/mL. Antibody can also be used for immunohistochemistry starting at 5 ug/mL. For immunofluorescence start at 20 ug/mL. Antibody validated: Western Blot in human samples; Immunohistochemistry in human samples and Immunofluorescence in human samples. All other applications and species not yet tested. Optimal dilutions for each application should be determined by the researcher.

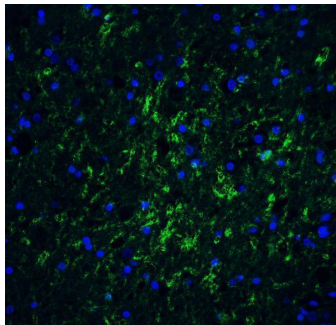
Anti-IRGM Antibody (A03614) Images



Western blot analysis of IRGM expression in SK-N-SH cell lysate with IRGM antibody at (A) 1 and (B) 2 ug/ml.



Immunohistochemistry of CD4 in human thymus tissue with CD4 antibody at 5 ug/ml.



Immunofluorescence of IRGM in Human Brain tissue with IRGM antibody at 20 ug/mL. Green: IRGM Antibody (A03614)
Blue: DAPI staining

Submit a product review to [Biocompare.com](https://www.biocompare.com)

Submit a review of this product to [Biocompare.com](https://www.biocompare.com) to receive a \$20 Amazon.com giftcard! Your reviews help your fellow scientists make the right decisions. Thank you for your contribution.



Anti-IRGM Antibody

For Research Use Only. Not for use in diagnostic procedures.